

the neighbourhood COMMUNITY

IN
THROUGH
FOR

A richer life in the Bucureștii Noi neighborhood
More connected
More balanced
More quiet

This participatory planning approach is a collaboration between the Association for Urban Transition (ATU) through Urboteca (urban pedagogy and participatory planning program within ATU) and the Civic Initiative Group - New Bucharest (GIC-BN) within the applied research project UEL - Urban Education Live (<http://www.urbedu.live>), an ERA-NET Joint Partnership Initiative program.

UEL is carried out by ATU with the support of UEFISCDI - Romanian Ministry of Research in an international consortium coordinated by the Faculty of Architecture in Tampere, Finland. Partners: Sheffield School of Architecture, Ljubljana University School of Sociology. Associated partners: IPOP, Slovenia and Ion Mincu University of Architecture and Urbanism, Bucharest.

Planul Comunitar
de Dezvoltare a
Zonei Urbane
Bucureștii Noi



GRUPUL DE INITIATIVĂ
CIVICĂ
BUCUREȘTII NOI

7 neighbourhoods to be proud of



The objectives of the **Urban Education Live** project aim to bring the academic environment closer to the neighboring communities, by initiating pilot collaboration actions between researchers, teachers and students from various university centers and groups of inhabitants, associations whose role is to coagulate the individual interests of residents to define the public interest at the scale of a neighborhood.

From the first meetings with representatives of the **Civic Initiative Group - Bucureștii Noi**, the **URBOTeca** team found that there are very good premises to develop a pilot program, aimed at identifying residents' concerns using different tools (questionnaires, map questionnaires, regular meetings) to define and promote to the public authorities the common expectations and needs of the inhabitants of this urban area.

2017 – primele întâlniri GIC-ATU
2018 – program fellowship Urboteca
2018 – participare OAR atelier – PUZ
Straulești – urma să fie inițiat de PMB

Evenimente:

-octombrie 2018 – Târg de cartier în Bucureștii Noi
-mai 2019 - Școala Altfel - Școala nr. 184 – Străulești
cu asociația ANTISTATIC – Portret de cartier
-iunie 2019 - New PUZ in town - Godeanu



RAPORT DE CERCETARE APLICATĂ:

Opinii ale locuitorilor privind utilizarea Teatrului de pe bulevardul Bucureștii Noi



<http://atu.org.ro/portfolio-item/urban-education-live/>

Social mapping and communication methods used: Interviews, questionnaires, seminar with guests at GIC BN meetings, editing of visual materials distributed to residents for information (urban pedagogy), interactive model - theater and adjacent area, collection of old photos - neighborhood memory - online, spaced, role-playing, maptionnaire,



Planul Comunitar de Dezvoltare a Zonei Urbane Bucureștii Noi



GRUPUL DE LUCRĂRI
CIVIC
BUCUREȘTI NOI

From January 2018, all the processes of initiation and elaboration of some documents and documentations of urban planning and design in New Bucharest were followed.

Interviews were conducted, opinions on the revitalization of the theater and the adjacent area with several interactivity tools were gathered, as well as questionnaires (correlated with the results of the questionnaire conducted by GIC-BN in 2017). **ANNEX**

Flyer distributed in the Străulești, June-August 2019



The **maptionnaire** platform is an ideal tool to easily collect individual approaches and see how overlaps and concentrations of individual opinions lead to an understanding of the **COMMON INTEREST**.

Since August 2019, this online participatory mapping tool (map questionnaire) has been used, provided free of charge by: **MAPTIONNAIRE**.

<https://app.maptionnaire.com/en/6887/>

All the proposals described in this document are based on the results obtained through this method.

Advisory group for completing the questionnaire:

arch. Mihaela NEGULESCU, Grăia BĂDESCU, Bogdan IANCU, Andra Mitia DUMITRU,

and from GIC: Serghei DUMITRESCU, Mihail CRISTEA, Mihai PAVEL, Elena EMACU

Questionnaire design: architect Vera MARIN, architect Daniela CALCIU, architect Elena ION

Map processing with GIS programs: Eng. Liliانا Denisa ANDREI

Planul Comunitar de Dezvoltare a Zonei Urbane Bucurestii Noi



Inspired by
Neighbourhood
Planning from England

What is a community plan

for the development of an urban area?

It is a **bottom-up participatory planning approach**, from individually expressed needs and desires about the environment to the identification of the needs and aspirations of the neighborhood community.

From the ideas thus identified, public administration decision-makers, electoral programs for candidates in local elections can get inspired to take concrete measures, but also associations and foundations that want to benefit residents, real estate developers, economic agents interested in understanding the area better for their business plans.

PRINCIPLES OF PARTICIPATORY PLANNING

a framework which allows expressing opinions and necessities – with no fear, in a friendly atmosphere (equal rights)

a process which encourages the acknowledgement of resources, not only of problems

realistic optimism 😊



an approach in which the user experience is very important

an approach that addresses more topics simultaneously: an integrated approach (correlation between districts)

images from the Urboteca
Hackathon in Bucurestii Noi,
November 2 and 3, 2019



an attempt to harmonize perspectives and interests (conflict prevention and even seeking common gain: WIN-WIN)

**Planul Comunitar
de Dezvoltare a
Zonei Urbane
Bucureștii Noi**



A. AMENITIES/EQUIPMENT FOR PUBLIC (spaces for activities with an audience)

B. ENVIRONMENT (problems and opportunities)

C.MOBILITY (public transport users, drivers, pedestrians, cyclists)

D. NEW-OLD TENSIONS (defense regime, urban design, notifying and authorization)

**Community Plan for the Development of Bucureștii Noi
urban area (CPD – UA – BN)**

PCD – ZU – BN is organized in four sections that are defined around **important themes for this part of the city** (the relevance of the themes is based on conclusions drawn from interviews and questionnaires from January 2018 to August 2019).

The ideas and arguments presented below are the result of a collaborative effort not only between GIC and ATU, but also of generous people with their time and skills, who responded to the invitation issued by ATU or who were selected as participants in HACKATHON on November 2 and 3, 2019.



Planul Comunitar pentru Dezvoltarea zonei urbane Bucureștii Noi (PCD - ZU - BN)

Community Plan for the Development of Bucurestii Noi urban area (PCD - ZU – BN) sets out to regenerate the identity of the neighborhoods in Bucureștii Noi taking into account the local reality and the wishes expressed by the inhabitants. The hope *for better* is translated into projects that have the chance, if correctly and substantially implemented (based on serious feasibility studies, projects done with professionalism, correct urban management), to endogenously modify the functionality of some spaces.

A *healthy* neighborhood meets both the basic needs of a community, such as accessibility, equal opportunities, primary facilities, mobility, sanitation, but also the social needs, belonging or self-realization.

Through this PCD, decision-makers are called upon to pay attention to the **voice of the community** and to act, by mobilizing the resources at their disposal, to fulfill what, in the medium and long term, would be the first **coherent** model of success of revitalizing an area through a joint intervention with the citizens.

Of course these proposals are only pilot projects, which require detailed analysis before, during and after implementation. The time-purpose-cost triad will be taken into account at a later stage in these preliminary proposals, in which both public-private and public-public partnerships should be taken into consideration.

The goal? Reaching the 7 Re-s:

Regeneration, Revitalization, Restoration, Relationship, Relaunch, Recovery, Representation. Belonging to a sustainable neighborhood that represents you is the ultimate goal, and to achieve it we all have a sense of **responsibility**.

Important objectives are also related to encouraging small and medium entrepreneurship projects and opening up the opportunity for residents to carry out activities with multiple values in their own neighborhood.

A.AMENITIES/ EQUIPMENT FOR PUBLIC (spaces for activities with an audience)

ATU Coordinator:

architect Daniela CALCIU

Inspirational guest: Alexandra ȘTEF, author of a consultation report on cultural needs in New Bucharest for the file Bucharest - European Capital of Culture

GIC representative: Cristina Tudorache

Participants with training in architecture, urbanism, geography, engineering, landscaping: architect Adriana Maria POPA, Urb. stud. Victoria MATEI

Participants with training / experience in communication: architect Ilinca POP

Participants with training in anthropology, political science, sociology: Anthr. Ruxandra PĂDURARU



A richer life in the neighborhood

Leisure time options for everyone

On Saturday afternoon, Ana goes with her two children to the cultural center in the neighborhood. Her little girl goes to ballet class, the little boy to basketball practice. They then decide to stay at the play performed in the big hall on the 1st floor.

“I can spend a weekend filled with fun activities right here in the neighborhood.”

THE CHANGE

The theatre becomes a community-cultural centre which activates, connects and extends leisure time options.

BENEFITS

- Cultural offer based on the place and inhabitants
- Participatory program model
- Centre for surrounding economic activities

Social gastronomic market

On Saturday morning, Sergiu goes to the market with his shopping list for lunch. He feels the scent of freshly ground coffee. He sees Tiberius at the window. They talk and decide to return to the cafe and in the evening too for dinner, with their families.

“I happily go to the market.”

THE CHANGE

The market becomes an accessible, friendly public space in which everybody can find his/her place and also for leisure time activities, including in the 6 pm – 10 pm interval.

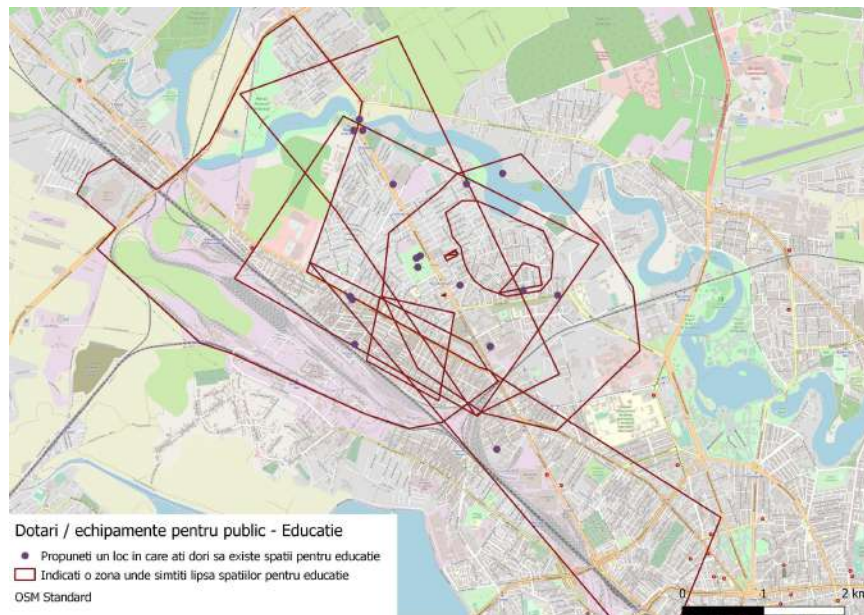
BENEFITS

- Local neighborhood entrepreneurs
- Eating out in the market
- Social life with an extended program

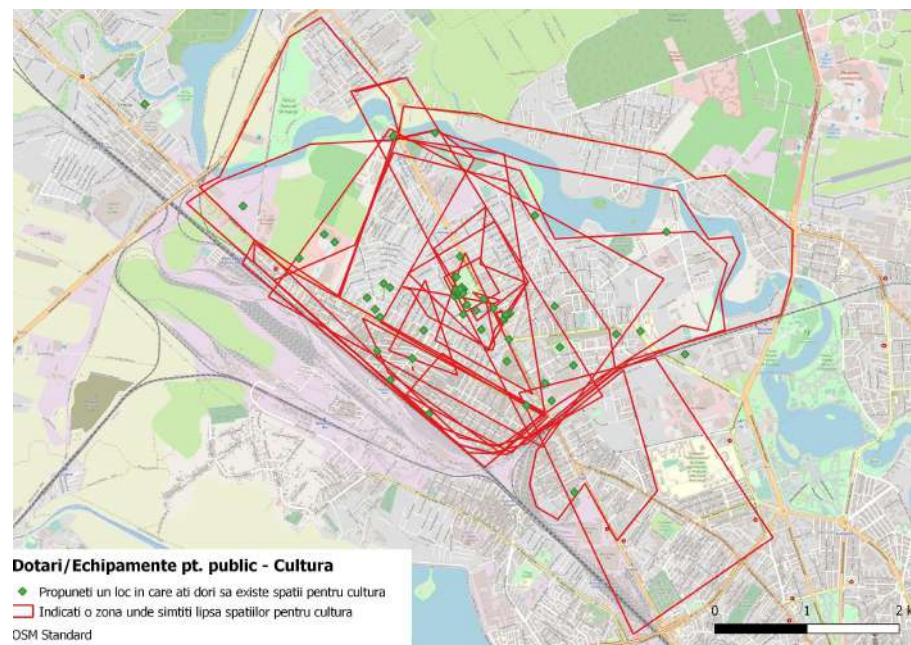
A. AMENITIES/ EQUIPMENT FOR PUBLIC (spaces for activities with an audience)

A richer life in the neighbourhood. Results after consulting residents about opinions and perceptions situated in the space

Amenities/equipment for public – Education - Suggest a place in which you would like a space for education OSM Standard



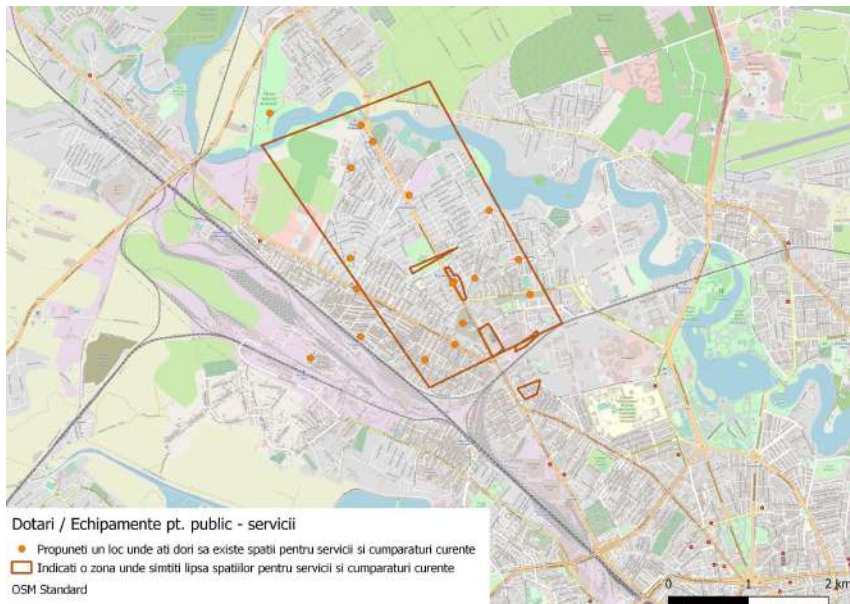
Amenities/equipment for public – Culture – suggest a place in which you would like a space for culture OSM Standard



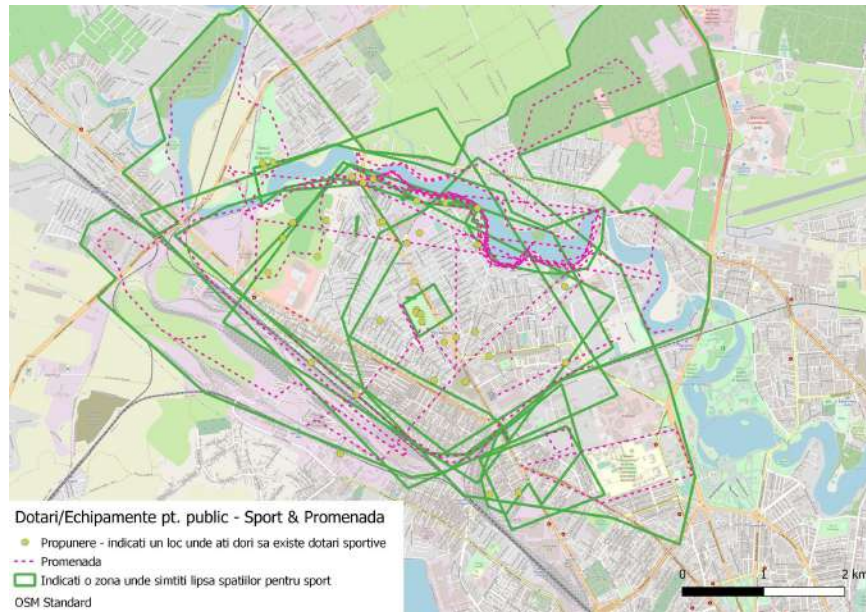
A richer life in the neighbourhood.

Results after consulting residents about opinions and perceptions situated in the space

Amenities/equipment for public – Services - Suggest a place which you would like to have areas for services and daily shopping. Indicate an area which lacks an area for services and daily shopping OSM Standard



Amenities/equipment for public – Sport & promenade - Proposal – suggest a place which you would like to have sports facilities. Indicate an area which lacks an area for sports activities OSM Standard



A. AMENITIES/ EQUIPMENT FOR PUBLIC (spaces for activities with an audience)

1. THE THEATER
2. THE MARKET

BUCUREȘTII NOI AREA

MAP OF BUILT SPACES/FREE SPACES -2012-

KEY

LIMIT OF RESEARCHED AREA

STREET VIEW

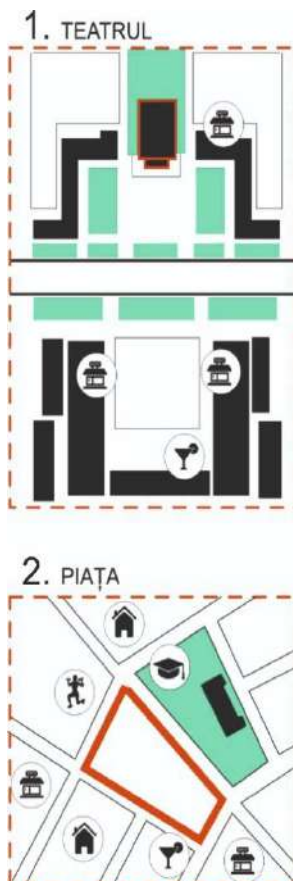
WATERS

RAILROAD

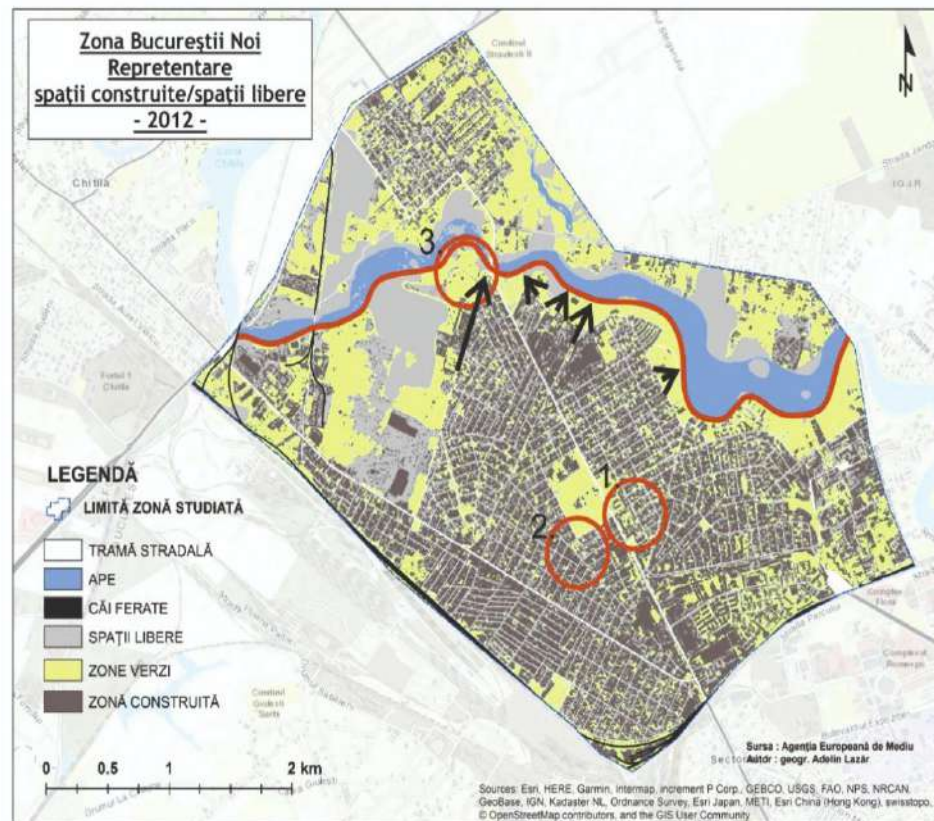
EMPTY SPACES

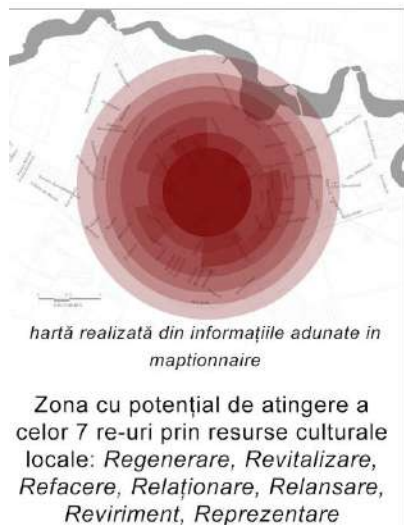
GREEN SPACES

BUILT AREA



MAP OF BUILT SPACES/FREE SPACES -2012-





1. The theatre (+ the ensemble made up of the summer theatre and the library and the kids' circle in the park)

The central element: The theater courtyard organized as a PUBLIC SQUARE (which Bucharest lacks completely). The public square is the central element of a community, and it must be understood in terms of the *common good*. Through communitarianism, the local identity is shaped and social movements are born. Facilitating such non-commercial places *for people* contributes to community cohesion and rethinking common values. It is an inclusive space, which solves in some places the restriction of the access of certain socio-demographic categories to public life, etc.

We think of activities both within the theater (which is central to the identity of the area) and in the adjacent space (courtyard), so as to facilitate outdoor activities. By planning a cultural and entertainment program around the theater, this area will become accessible to people outside the neighborhood, which will make this area a model at the level of the Capital.

CE INSEAMNA SPATIU CULTURAL? (fără bariere)

1. Prezentari de arta



2. Organizatii culturale de prezervare

3. Procese creative



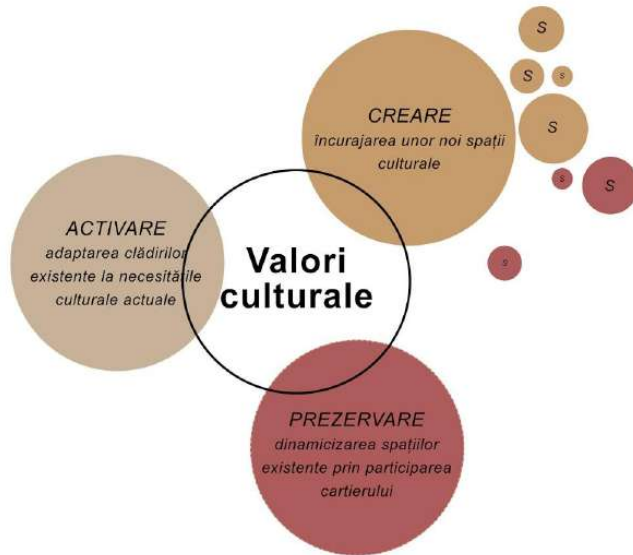
4. Instruire in artă/educație, viață artistică

3. Diversitate socială



The theatre

(+ ensemble made up of the summer theatre & the library and the kids' circle in the park)



The opportunity to assert the Bucureștii Noi area as abounding in development and / or leisure opportunities should not be neglected, because an effervescence of these neighborhoods means the engagement of local human, social, economic and cultural capital.

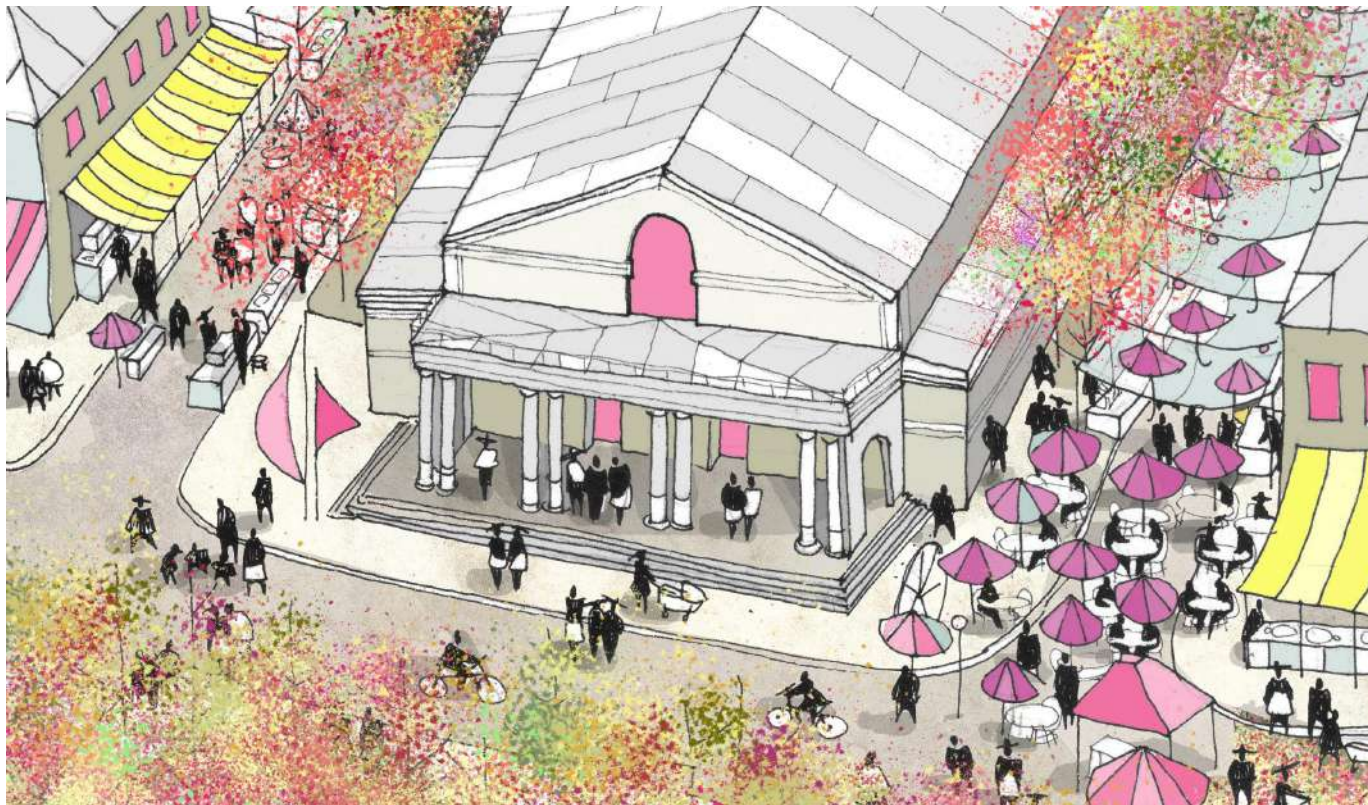
In the spaces adjacent to the theater, small local businesses can be developed (restaurants, cafes, pubs) which would increase, on one hand, the very limited offer of the area, and on the other hand, would mark the transition to a flourishing, active, populated area.

The theater will represent the cultural and social glue of the Bucureștii Noi area and will have an educational, social, cultural and entertainment role. For this transformation, we bring to the fore the need for a transformation of the understanding of the cultural act and its planning: in addition to the need to arrange spaces where residents can meet cultural operators, **a program (cultural management) is necessary that has the flexibility to receive independent cultural operators in spaces managed by the local public authority.**

A richer life in the neighborhood. The former house of culture with a cinema / former theater/ a FUTURE for the community center and A LOCAL DEVELOPMENT DRIVING FORCE

Actors:

- District 1 City Hall - cultural center (service in the organizational chart)
- GIC Bucureștii Noi (participatory cultural programming)
- Romanian Order of Architects
- Fiscal authorities
- Alethea + Kinderakademie Kindergarten
- Traders in / outside the area
- Independent public operators



2. 16 februarie Market

Reorganize space as FOOD MARKET - in the broadest sense of the word, which does not include only food.

The first FOOD MARKET in Romania (complying with stricter regulations)

Rearrangement of the market, extension of social and economic and community life of the market and the neighborhood.

Benefits: Increasing the attractiveness of the area, Lifestyle Branding, Extension of operating hours, which leads to securing the area, Achieving an inclusive sociability (offer for all socio-demographic categories).

Opportunities for temporary outdoor activities - the space adjacent to the market (fairs, yard sales of community members, etc.).

(parking problem solving and local traffic reorganization)

Encourage local producers, local artisans, business opportunities, opportunities to assert themselves.

Food Market is a concept that brings together under the same roof both the functions of a market in the strict sense of the word (food buying and selling) and *bien-etre* areas, such as small cafes, restaurants with a wide range of food, commercial spaces with handicrafts, bars , the possibility to buy food cooked on the spot, practically widening the spectrum of possibilities.

Pedestrian streets (permanent or occasional) for people + the opportunity of outdoor trade (Christmas fair, neighborhood day, autumn day, etc. - or possibly in the space adjacent to the market).

The market:

it becomes a public leisure space,

easily exceeds the utilitarianism of shopping,

it becomes a welcoming place, **in, through and for** the community.

A. AMENITIES/ EQUIPMENT FOR PUBLIC (spaces for activities with an audience)

LA BOQUERIA, Barcelona, Spainia

Photo source: Left- <https://www.intrepidtravel.com/adventures/mi-gusto-a-guide-to-barcelonas-la-boqueria/>

Right - <https://thecreativeadventurer.com/blog/guide-to-eating-at-the-la-boqueria-market>



THE MARKET HAL, Rotterdam, Olanda

Photo source: Up

<https://brandnewcravings.com/2014/10/28/the-battle-of-the-indoor-food-market-rotterdam-versus-amsterdam/>

Down -

<http://preneurl.com/market-hal-rotterdam-city-rotterdam-gets-lot-international-attention-new-shopping-area-food-market-market-hal/>



MERCATO, Roma, Italia



Photo source: Left:

<https://www.fromhometorome.com/romes-food-markets-some-of-many-let-alone-campo-de-fiori/>

MARKET HALL, Varşovia, Polonia

Photo source: Left - <https://www.pinterest.co.kr/pin/545850417306162006/>

Right- <https://www.europeanbestdestinations.com/travel-guide/wroclaw/market-hall/>



A richer life in the neighborhood.

16 februarie market. A European Food Market, a place in which everybody finds his/her place.

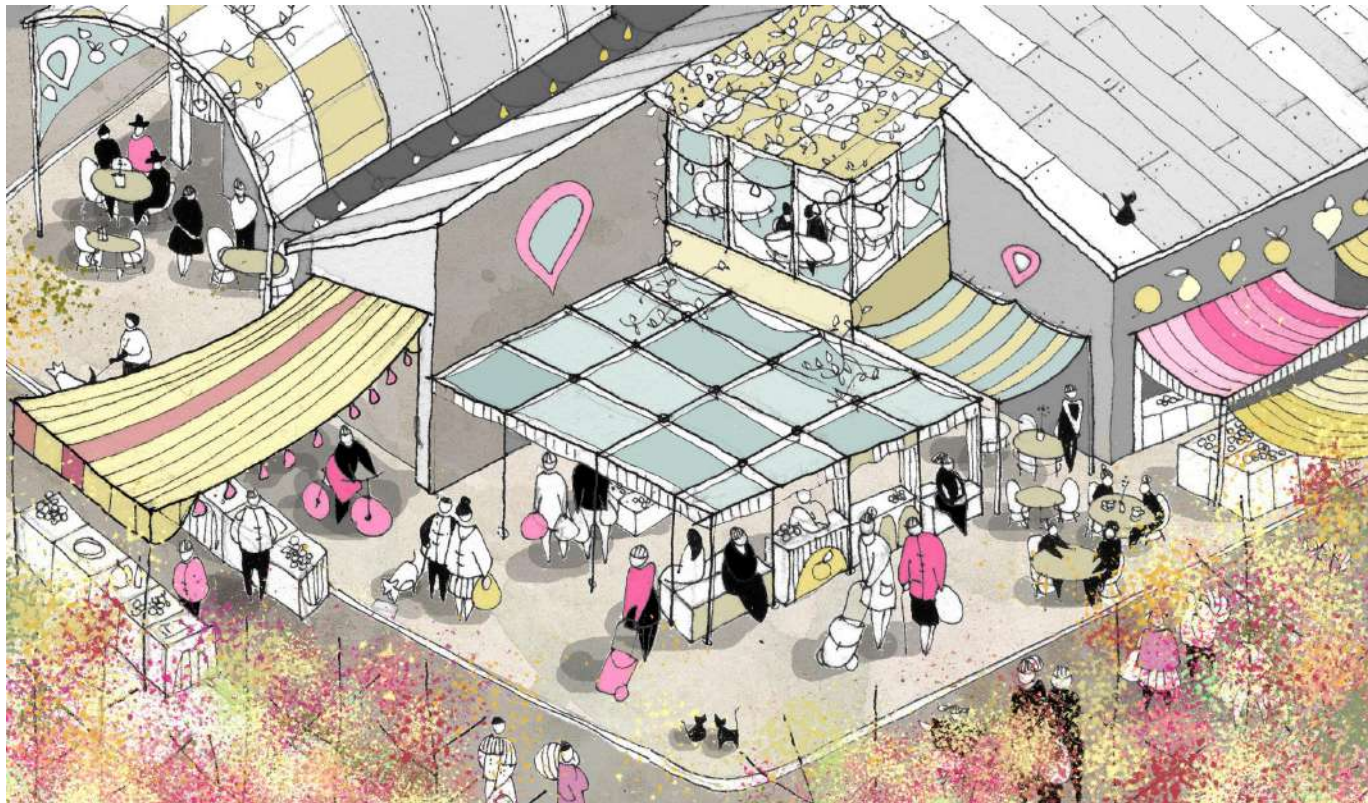
Possible actors involved:

GIC Bucureștii Noi

SOLUTION COMPETITION
– OAR – Romanian Order of
Architects

District 1 City Hall

Discussions with the people
to whom the market was
leased (finding common
ground)



3. The Lake

Lake - public domain (surface waters, Law no. 213 of 17 November 1998 on public property and its legal regime)

Oasis of peace - nature, recreation, recharging - outdoor activities economically NONCONDITIONED

Transformation of space through sanitation, facilitation of accessibility, mediation of human-nature connection through minimal interventions (urban furniture) to create a suitable, safe, clean space.

Benefits: Healthy lifestyle encouragement, inclusive space, encouragement for pedestrian / bicycle access, proximity to a common good of which the community is unaware, ventilated area (low pollution, quiet, breathable air).

Main Purpose: awareness of the RIGHT to access the lake area;

The lake is a common good!

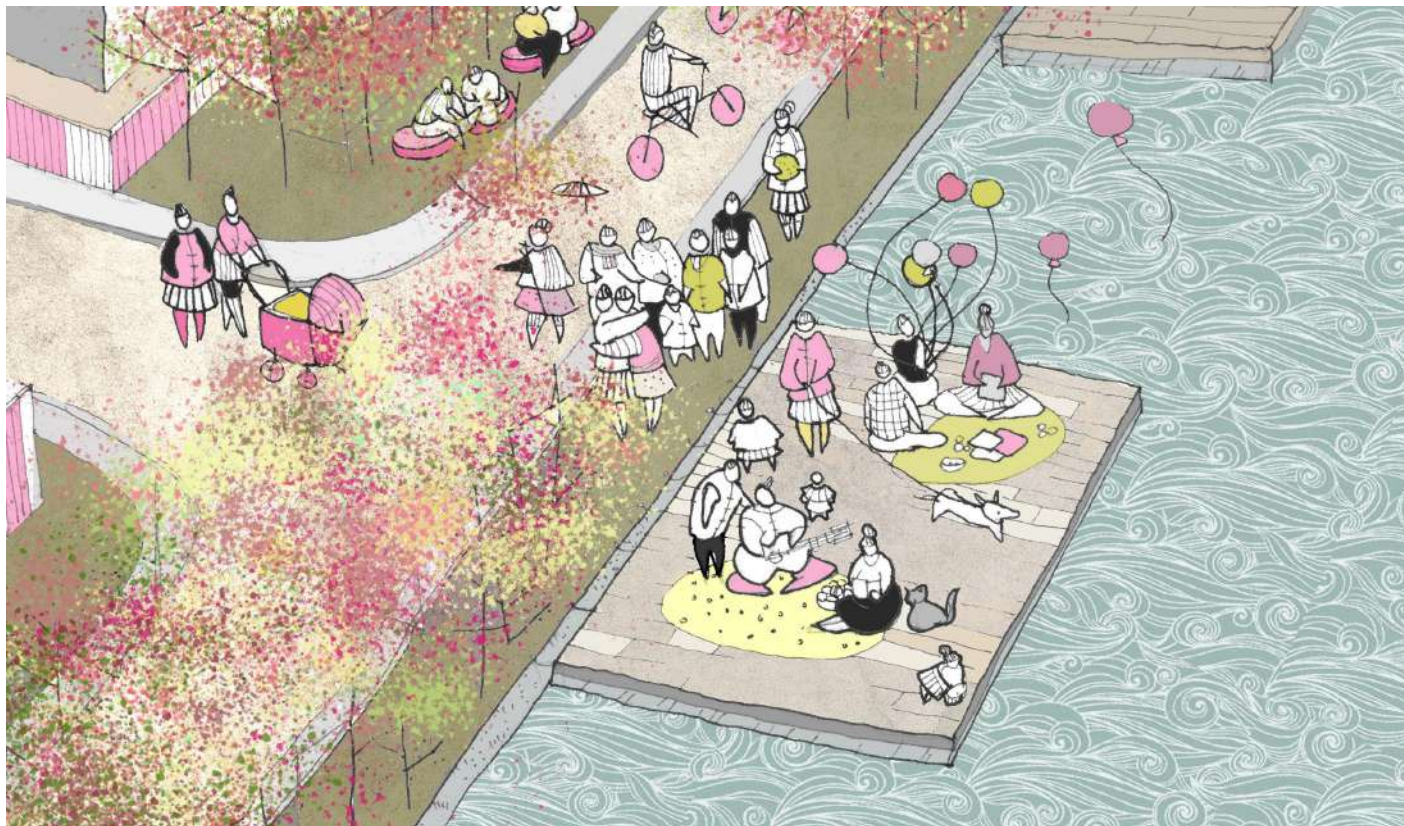


A richer life in the neighborhood.

The locals want to have access to a lake which is being taken care of!

Actors possibly involved:

- GIC Bucureștii Noi
- Chief Architect – District 1 City Hall
- Chief Architect – PMB – Urban Design (minimal interventions)
- ADP District 1 + ALPAB
- Companies for which the environment is of outmost importance in CSR (*Corporate Social Responsibility*)
-



B.ENVIRONMENT (problems and opportunities)

ATU coordinator:

anthr. sociologist Andra Mitia DUMITRU,

urb. Matei COCHECI

Inspirational Guest:

Diana CULESCU, president of ASOP

GIC representatives:

Mihail CRISTEA, Serghei DUMITRESCU

Participants with training in architecture, urbanism, geography, engineering, landscaping:

arch. Ema GLĂVAN, landscape eng. Ioana MARIN, urb. stud. Bucura CONSTANTINIDE

Participants with training in anthropology, political science, sociology:

Anthr. Anna BERZA



A more balanced life in the neighborhood.

Safe environment

It's Wednesday morning and Mr. Georgescu is out on the street to take out the green garbage container in front of the gate. On the street, he meets his neighbor Ștefan, who tells him that at school, his little girl, together with her colleagues, made origami figurines from recycled paper. Cleanliness and education start at home.

"Waste is no longer trash, but a resource."

CHANGE

Waste is not just the mess you want to get rid of in the household. It is a resource that can return into your life without causing harm or polluting.

BENEFITS

- Teaching recycling and selective collection is provided locally for the long term
- It helps maintain a clean environment in the neighborhood
- The waste is reintegrated into the local circuit at maximum capacity

HOW CAN WE TURN THIS VISION INTO REALITY?

NON-PROFIT ACTORS

Realitatea Socială Association - information on selective waste collection for the elderly; **Salvați cartierele Dămăroaia și Bucureștii Noi Association** - helping to landscape Bazilescu Park with a team of volunteers (residents of the neighborhood); **Bucureștii Noi Foundation** - launch of a campaign to collect waste from the railway area; **Altheea School** - informing children about the effects of pollution and the selective dumping of garbage; **Armutel Romania Aid Association** - start of initiatives to plant trees with the help of children, helping to form a community.

PRIVATE ACTORS

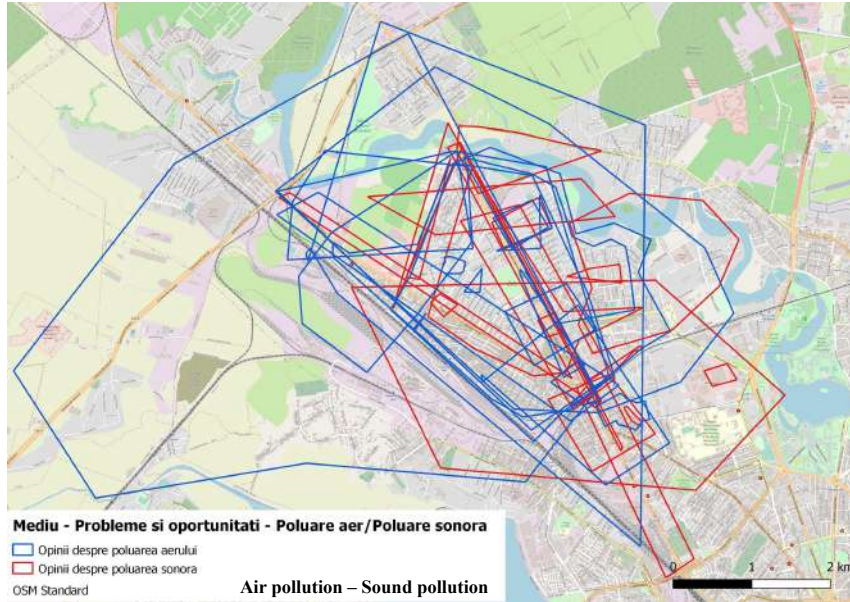
Kaufland- creating a green and social space (ex: Gradinescu); **Lidl, Kaufland, Colosseum** - offering vouchers or discounts for bringing bottles for recycling; **AEEPM** - informative spots about selective collection on TV / media, competition of educational projects supported by NGOs

ACTORS IN THE ADMINISTRATION

Public Domain Administration - installation of several garbage cans, sanitation of green spaces where there are garbage dumps; **Local Police** - prevention of illegal waste storage; **Romprest** - flyers about collection days, communication campaigns

A more balanced life in the neighborhood. Results after consulting residents about opinions and perceptions situated in the space

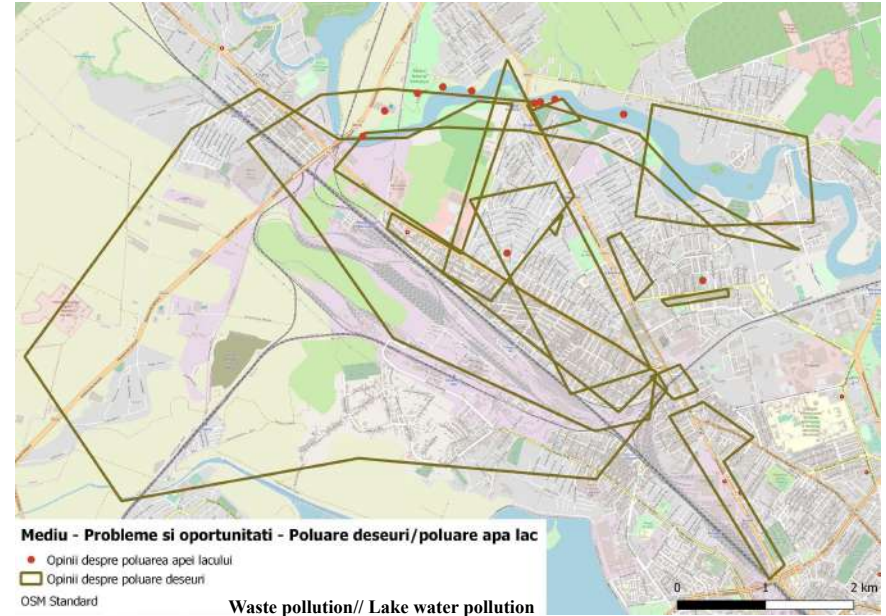
Spatial survey results - Maptionnaire Platform - 136 respondents - 01.11.2019



Opinions on air pollution

Opinions on sound pollution

OSM Standard



Opinions on lake water pollution

Opinions on waste pollution

OSM Standard

B.ENVIRONMENT (problems and opportunities)

A more balanced life in the neighborhood.

Arguments – explanatory diagrams



In Bucureștii Noi, the inhabitants complain about the waste situation. Insufficient waste bins in the public space lead to improper storage on the public domain. This drastically decreases the quality of public space and the perception of residents about the neighborhood. A neglected and dirty public space or green space becomes invisible in the daily life of the inhabitants. At the level of perception, the area turns into an unsafe, unpleasant, unfriendly area where the inhabitants end up using these spaces only to perform certain tasks (shopping, banking, transit).

Residents of the neighborhood would like to be provided with several areas for separate waste collection (dry fraction). Residents are not properly informed about selective waste collection - there are no information and education campaigns for the neighborhood population on responsible waste management.

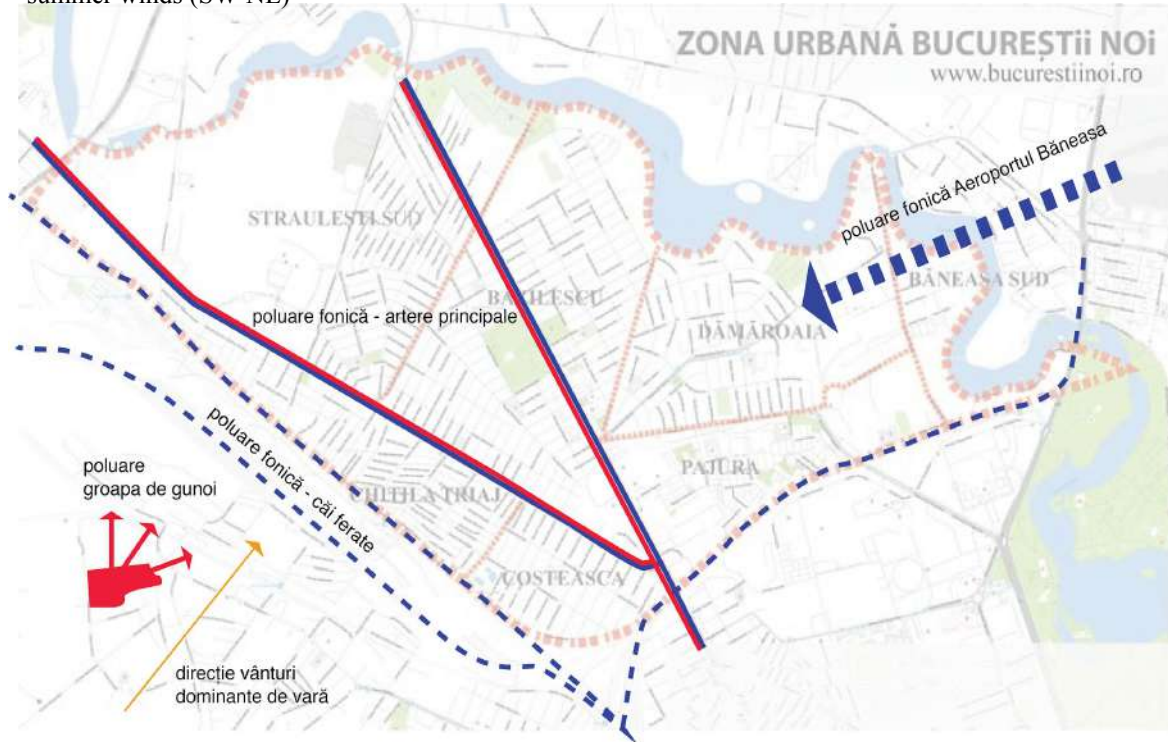
Photo source: personal archive GIC Bucureștii Noi

Air and sound pollution

A more balanced life in the neighborhood.

Arguments, explanatory scheme

Air pollution, caused by car traffic on the main arteries but also by waste operators in the SW of Chiajna Rudeni neighborhood that emit unpleasant odors and other chemicals in the direction of the prevailing summer winds (SW-NE)

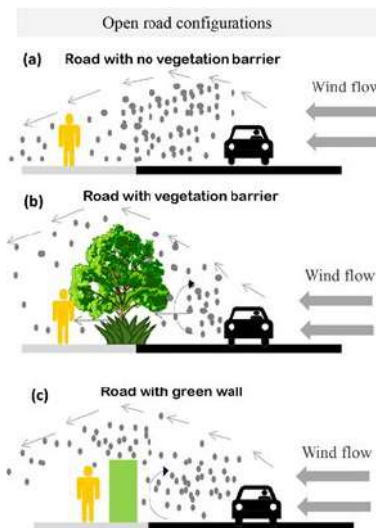


Noise pollution, caused by heavy car traffic concentrated on the two major arteries: Chitila Road and Bucureștii-Noi Bd., but also by the proximity to the railway and Băneasa airport.

A more balanced life in the neighborhood.

Arguments, explanatory scheme

REDUCING POLLUTION IN HEAVY TRAFFIC AREAS: Reducing noise pollution in high traffic areas can be tackled in two ways: either by damping the noise produced or by reducing it. The ideal solution is a combination of the two. Sounds caused by traffic can be dampened by installing sound-absorbing panels or, for a green approach, by planting vegetation (shrubs, tall grass) that has this role. Careful! Vegetation or signs must not completely block the visibility between the sidewalk and the street, as this decreases the level of comfort and the feeling of safety of people and increases the risk of accidents in the area of pedestrian crossings. For this reason, noise damping through objects / buffer vegetation must be accompanied by a decrease in the noise level initially produced. This can be achieved through mobility measures such as: reducing the maximum legal speed on that road segment, creating special lanes for public transport and alternative transport, optimizing the time spent at traffic lights, etc. The good news is that adopting measures in these directions will solve both noise and air pollution caused by traffic.



Waste management

For successful waste management, two elements are needed: adequate infrastructure and informing citizens on a large scale. If there is infrastructure, but people do not know about it or do not know what the collection rules are, it will be inefficient (mixed or contaminated waste, empty collection containers etc.). If people are aware of the importance of recycling, but there is no infrastructure, they will be frustrated and helpless.

What do we mean by adequate infrastructure? Installation of selective collection containers at each block / house, as well as installation of street containers in the circulated areas. Collection in two fractions (wet and dry) is the minimum required, but it would be desirable to collect other types of waste separately: household waste separated from biodegradable waste (from which compost can be made), paper and cardboard separated from other waste dry because they are very easy to contaminate and can no longer be cleaned, etc.

How to inform people efficiently? Residents should know:

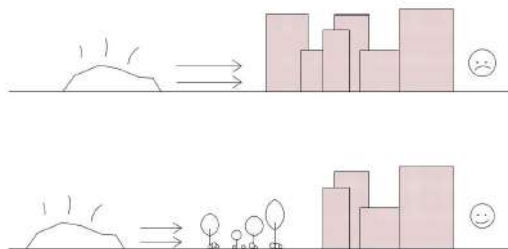
1. How to collect correctly (collection rules),
 2. Where to collect (dumpsters, yellow bags)
 3. When to collect (the specific days on which the fractions are collected, until what time they must take out the dumpsters, etc.).
- Additionally, awareness campaigns can be carried out in schools, parks and other areas where there is a large flow of people.

Public institutions should be an example of selective collection!

B.ENVIRONMENT (problems and opportunities)

A more balanced life in the neighborhood.

Arguments, explanatory scheme



Landfill Chiajna Rudeni

HOW CAN WE TURN THIS VISION INTO REALITY?

Air pollution caused by waste operators in the SW of the Chiajna / Rudeni neighborhood, which emit unpleasant odors and other chemicals in the direction of the prevailing summer winds (SW-NE)

Unpleasant odors can be easily combated by planting forest curtains that act as buffer zones and air filters. They should be located between the landfill and inhabited areas, in the direction of the prevailing summer winds. In addition, odors can be reduced through more selective collection and recycling-oriented waste management. In addition to the current split between the dry fraction and the wet fraction, it would also be useful to introduce a special fraction for biodegradable / compostable waste so that it can be used as fertilizer, instead of sitting in landfills and giving off toxic and foul-smelling substances. The production of compost should not only be the responsibility of the town hall, the inhabitants who have gardens can also be encouraged and informed in this regard.

HOW CAN THIS VISION
TRANSLATED INTO REALITY?

Non-profit actors

Bucureștii Noi Foundation, Salvați cartierele Dămăroaia și Bucureștii Noi Association - Campaigns to inform residents of the neighborhood about the negative effects of air pollution and the use of less harmful products.

Kindergartens - announcements made especially for preschoolers, to understand in advance what are the negative effects of air pollution and noise pollution.

Public Administration Actors

Local police - fines given to citizens who have cars that exceed the legal norms for air maintenance (air and noise pollution)

Ministry of Environment - supporting information activities on the positive things that are still in the neighborhood and making a parallel between the positive and negative parts, in terms of what is currently happening in this neighborhood

Directorate of Transport - checking buses and all means of public transport that fit the noise and air parameters so as not to pollute.

A more balanced life in the neighborhood.

Străulești Natural Park

Elena, Claudiu and Sebastian, their 3-year-old boy, go for a bike ride on Sunday. They stop in the Străulești Natural Park to do some bird watching. They learn more about the species and their ecosystem at the visitor center.

„It takes me 10 minutes to get to the park.”

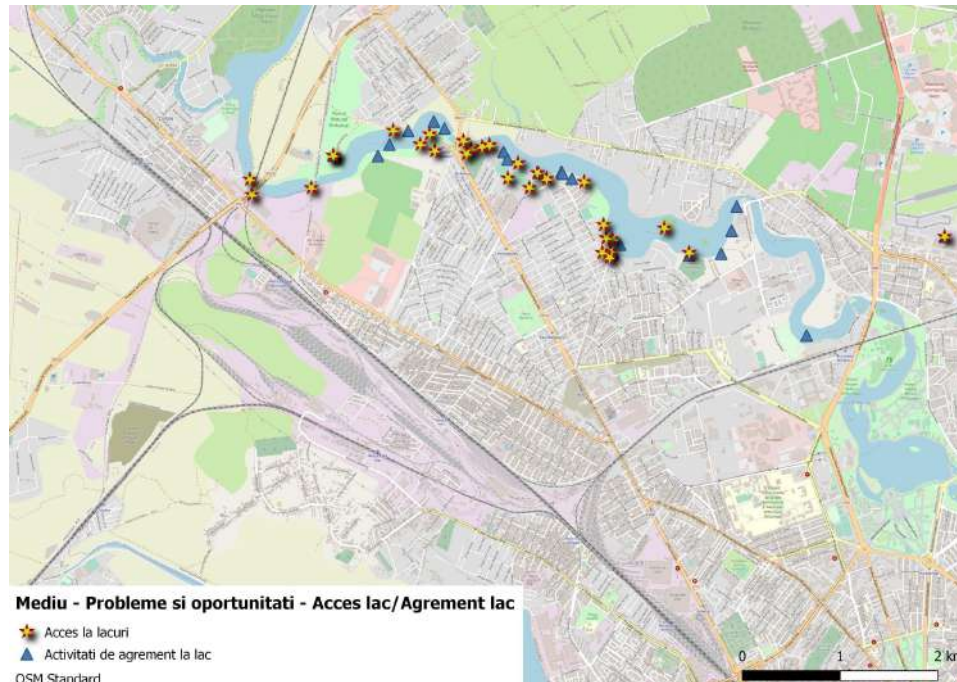
CHANGE

Lake Străulești, together with the forest perimeter (16 ha) in the northern part of the shore, becomes a capitalized local natural resource that enriches the leisure options in the neighborhood, in a healthy and natural environment for all generations and balances the recent expansion of the neighborhood.

BENEFITS

- Protected natural ecosystem
- It compensates for the expansion of the built environment
- The lake changes the relationship between **inhabitant - neighborhood** and even **citizen - city** by returning it to the inhabitants for the next decades.

Results of local consultations about opinions and perceptions localized in space

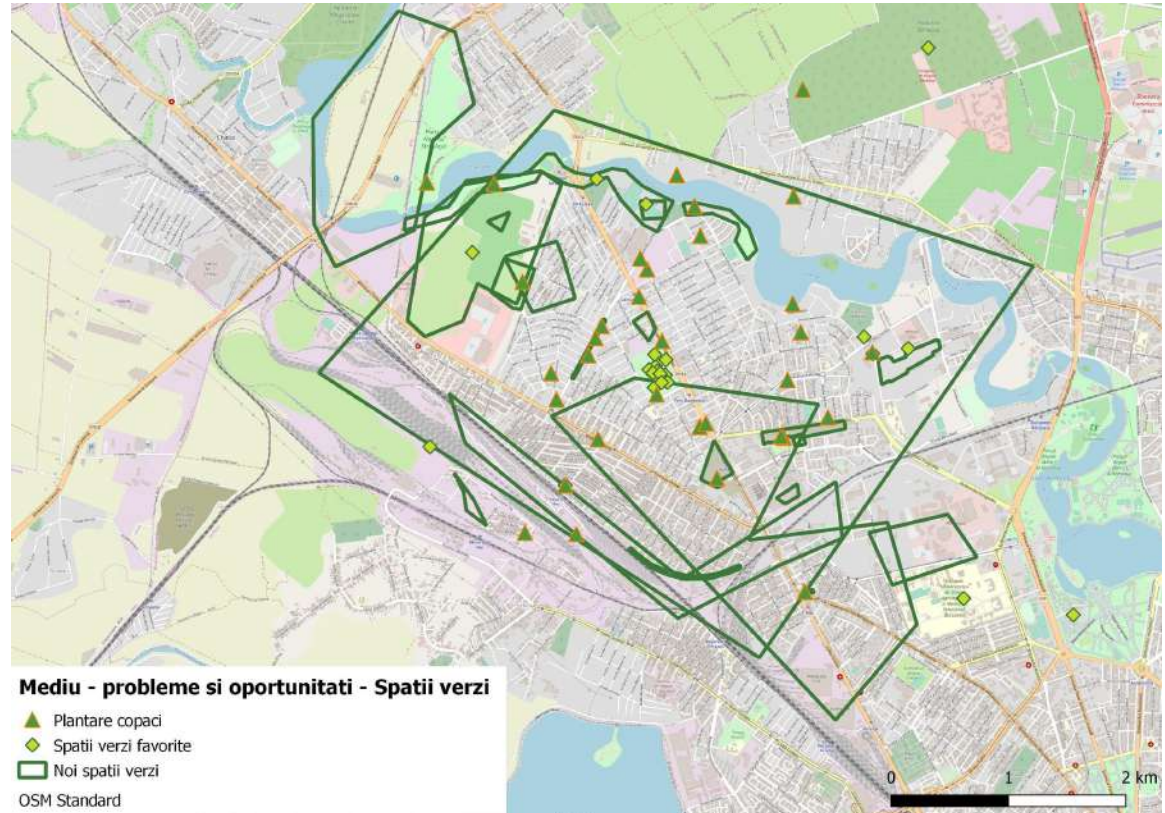


Results of spatialized survey – Maptionnaire Platform – 136 respondents, 01/11/2019

B.ENVIRONMENT (problems and opportunities)

A more balanced life in the neighborhood.

Results of local consultations about opinions and perceptions localized in space



Results of spatialized survey – Maptionnaire Platform – 136 respondents, 01/11/2019

A more balanced life in the neighborhood.

The green spaces in the city are important for the well-being of the inhabitants. They reduce stress, facilitate socialization and have a relaxing role.

For the inhabitants of the Bucureștii Noi neighborhood, the green relaxation space is most often associated with Bazilescu Park, the only one in the neighborhood. With a population of approx. 70,000 inhabitants, the park becomes overused, and the decrease in the quality of maintenance in recent years has had an effect on the perception of residents.

There are other green spaces in the neighborhood, many of them fenced and inaccessible, others created for children, with colorful plastic furniture but which are also over-requested by other members of the community (people in the neighborhood gather "for a beer", homeless people sleep on benches, etc.). These spaces are mainly located on Bucureștii Noi Bd. and are not evenly distributed in the neighborhood.

The proximity to the lakes Străulești and Grivița is non-existent in the perception of the inhabitants. Access to water is restricted both physically and visually and creates a barrier between the neighborhood and the northern part of the lakes.

ENVIRONMENT – Green spaces

GREEN IS BETTER!



Photo source: GIC Bucureștii Noi personal archive

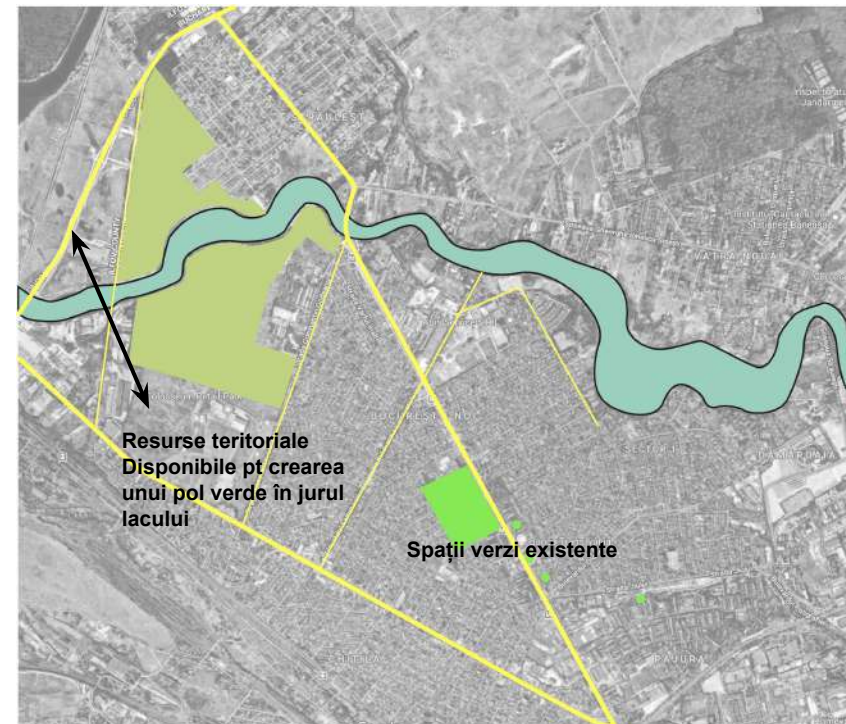
B.ENVIRONMENT (problems and opportunities)

A more balanced life in the neighborhood.

HOW CAN WE TURN THIS VISION INTO REALITY?

Although there are not many green spaces accessible in the neighborhood, and the territorial resources are limited, there are still solutions to these problems. Proper arrangement and maintenance of green spaces (small and very small) in the neighborhood (squares, green patches of earth, etc.) can create a more pleasant environment in which residents can walk, relax, rest (ex. pocket parks). The elimination of fence barriers and the use of those spaces for the real benefit of the inhabitant, requires minimal resources and can have maximum impact in the community (especially on heavily trafficked routes - major arteries, market access and other functional areas).

Another way to distribute the *leisure function* in the neighborhood (currently concentrated in Bazilescu Park) would be to open to the public the shores of **Străulești Lake** - creating a promenade and using adjacent territorial resources to create a " **Străulești Natural Park** " – the land located north of Lake Străulești is a wetland that can be capitalized. This kind of urban intervention would be beneficial not only in terms of leisure function, but also from an ecological and educational perspective - for example Văcărești Natural Park.



A more balanced life in the neighborhood.

HOW CAN WE TURN THIS VISION INTO REALITY?

ENVIRONMENT – Green spaces

GREEN IS BETTER!

Good practices – Văcărești Natural Park and urban forests

Natural parks and **urban forests** are vital to urban dwellers. On the one hand, it is a green oasis where residents can walk, relax, learn about urban wildlife and ecological importance. This can create a relationship of affection between residents and their neighborhood / city.



Good practices – Văcărești Natural Park and urban forests There are guided tours and bird watching tours in the Văcărești Natural Park

Photo credit: Helmut Ignat & Patricia Savu



Urban Forest with trails and belvedere spots in Stockholm

Photo source: landezine.com



Park-forest in Seoul

Photo source: visitseoul.net

A more balanced life in the neighborhood.

ENVIRONMENT – Green spaces

GREEN IS BETTER!

Good practices – Pocket Parks

Pocket Parks – those small urban spaces which are close to busy roads, with a service area nearby which is a socializing and relaxation spot.



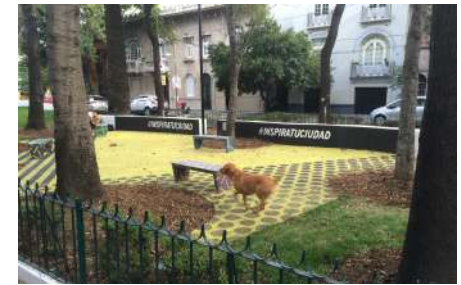
Pocket Park din Ottawa;
sursă foto: Aleksandr Zykov via
Flickr

Public spaces with benches, well
taken care of, clean, lit, with open
views



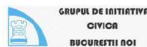
Ottawa Pocket Park

Photo source: Aleksandr Zykov
via Flickr



Pocket Park din Mexico City
Sursă foto: wikipedia

Planul Comunitar de Dezvoltare a Zonei Urbane Bucureștii Noi



C. MOBILITY (public transport users, drivers, pedestrians, cyclists)

ATU Coordinator:

anthr. ec Ruxandra MOCANU

Inspirational guest:

Mihaela NEGULESCU -Mobility master coordinator – UAUIM

GIC Representatives: Mihail CRISTEA, Serghei DUMITRESCU

Participants with training in architecture, urbanism, geography, engineering, landscaping:

Urb. Denisa LUNGU, urb. Bianca IVAȘCU,

stud. urb. Ana Maria PULBERE,

eng. Liliana ANDREI



A transit, but also a living area

Răzvan and Maria have a small house outside the city but work in Bucharest. They sometimes leave their car in the Străulești parking lot and take public transport, but most of the time they drive to the city. The traffic is crowded but safe.

“Although we are a transit neighborhood, a lot of cars go through, we have a safe and peaceful life.”

CHANGE

The efficient use of the Străulești car park, creation of faster public transport solutions. The easing up of traffic by solving the problems of (sub)crossing the Constanța bridge, several pedestrian crossings on Chitila Blvd., completion of the streets at Laminorului Blvd.

BENEFITS

- Fewer road accidents
- Good traffic flow without congestion and a lower degree of pollution.

Integrated mobility

Ioana now goes to work only by public transport. She gets there faster than by car. In addition, she doesn't even have to look for a parking space. Even on weekends, when she goes out in the city center, she goes by subway. She has a good connection to the subway station. When the weather is fair, she uses her bike on the specially designed lane. The car was only helpful when she went to the seaside at the weekend.

“Public transportation takes me anywhere outside the area.”

CHANGE

Improving access to stations, optimizing routes and opening new routes is making more and more residents prefer public transport, avoiding travelling by car.

BENEFITS

- “I live in a well-connected neighborhood.”
- “Now the air seems more breathable.”
- “Children are playing again in front of the block since our street is no longer a highway.”

A more connected life in the neighborhood.

Car independence

On Saturday, Ana walked with the two children to the cultural center in the neighborhood, although they could have gone by bus. It was a pleasant walk, the sidewalks are wide and safe. They planned to ride their bikes to the park in the afternoon. In 1 year, children will already be going to school and to practice by themselves, by tram or even by bike in the summertime.

"I easily get on foot anywhere in the neighborhood."

Change

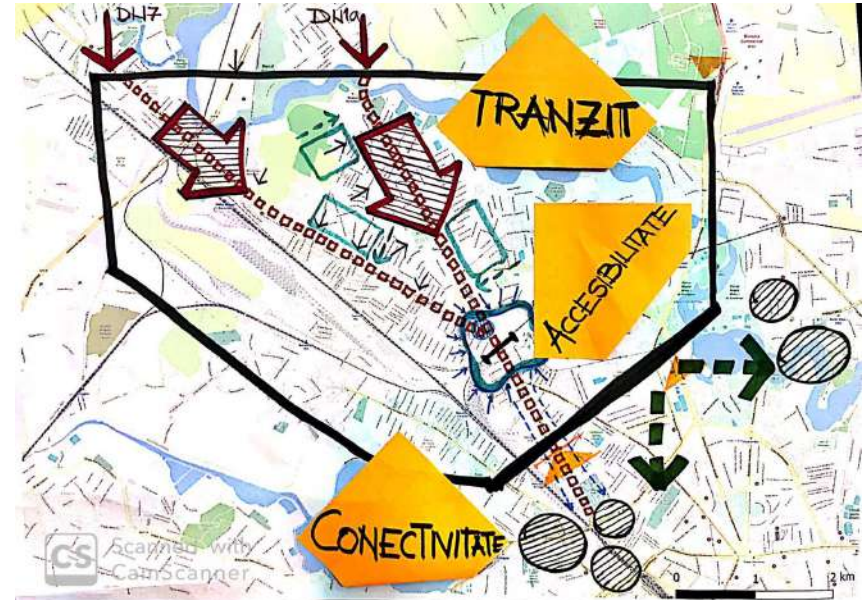
Reorganization of streets to favor pedestrians and cyclists, on their way to the market, subway stations, schools, etc. Introduction of one-way traffic reorganization.

Improving access to public transport will make Bucureștii Noi an easier neighborhood to navigate.

BENEFITS

- "Grandma can now go to the market by herself."
- "I get anywhere in the neighborhood in 20 minutes."
- "Finding a parking space is no longer stressful and we, the neighbors, don't even fight with each other anymore."

Bucureștii Noi is a **TRANSIT** district, the gateway to the city through the two national roads, crossed daily by a large number of cars. It is difficult to get from one place to another, the inhabitants of the neighborhoods in Bucureștii Noi have reduced **ACCESSIBILITY** to different areas. The inhabitants of Bucureștii Noi need transport solutions that will offer them a better **CONNECTIVITY** with the other areas of the city.

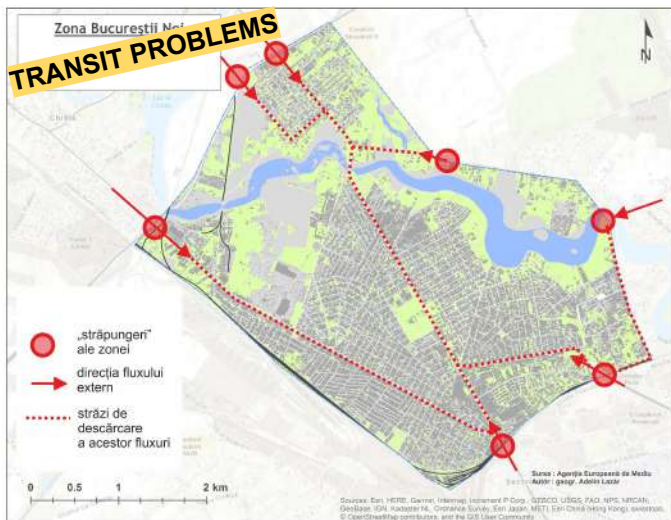


A more connected life in the neighborhood.

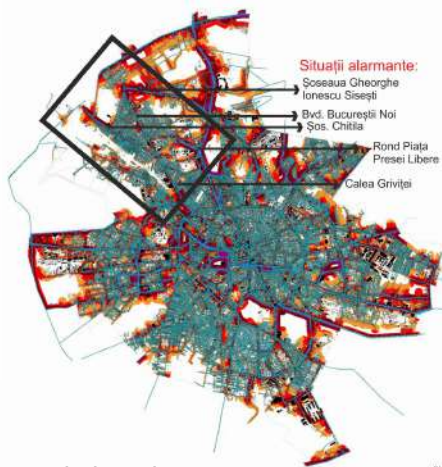
A transit, but also a living area

Every day Bucureștii Noi is crossed by a large number of cars that are transiting from the areas outside the city to the center in the morning and vice versa in the afternoon. Some of them stop **near the Străulești multimodal terminal** and are parked on the adjacent streets, in the residential area.

Parcarea terminalului multimodal Straulesti, in valoare de 77 de milioane de euro din Bucuresti, este aproape goala



Most of them go further, and one of the consequences of the large number of cars transiting the neighborhood at high speed on Chitila Bd., similar to a highway, are the **loud noise** and the **large number of accidents** in the area.



BUCUREȘTI
Harta de zgomot
Trafic rutier



„zone de conflict” - în care sunetul depășește 70 dB

sursa: <https://pressone.ro/zgomotul-si-furia-din-buc>



The consequence of the lack of efficient public transport solutions is that traffic is becoming increasingly congested on the way in and out of the city from the growing number of vehicles.

A more connected life in the neighborhood.

A transit, but also a living area

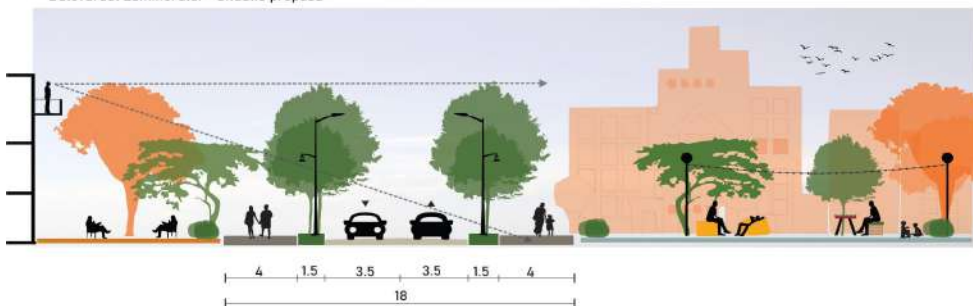
SOLUTIONS

A better **strategy for the operation of the Străulești car park**, the integration of the parking subscription in the public transport subscriptions. "You can't compare a parking lot in the center located a few meters away from work with one that takes you an hour or more to get there, after take 3 metros." Creation of direct public transport lines to important areas of the city (city center, Pipera, university areas)

FIT out solutions for pedestrians



Bulevardul Laminorului - Situație propusă



Fitting out the boulevards so as to allow the division of space between cars, cyclists, pedestrians, parking lot, green spaces (for example)



Reconfiguration / reorganization of Chitila Bd., for example the multiplication of pedestrian crossings, which will reduce the speed with which cars move.

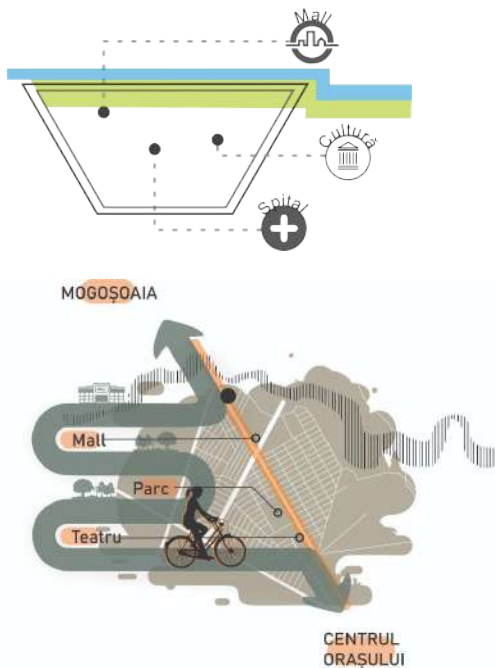


A more connected life in the neighborhood.

The lack or poor presence of public facilities and intense economic activity in the Bucureștii Noi area implies that **residents have to move outside the neighborhoods** to other areas of the city for a variety of services and activities: professional, leisure, cultural, access to medical services, shopping, etc.

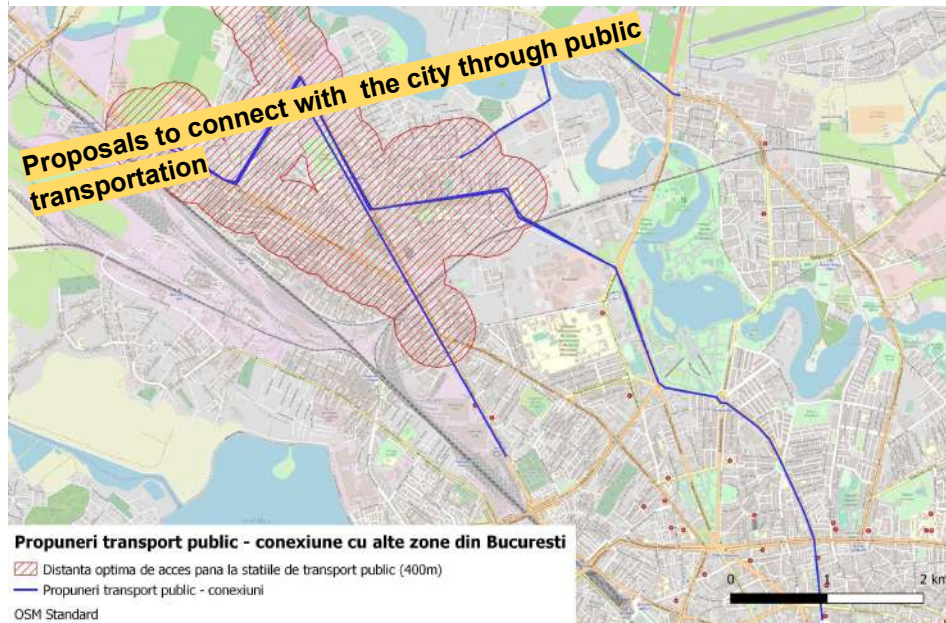
The solutions to solve the connectivity with the rest of the city can be: improving the access to the public transport stations, **optimizing the routes and setting up new routes** that will make more and more inhabitants prefer public transport, avoiding traveling by car. One of the most frequently reported problems is **the long duration of travel by public transport** caused by traffic congestion, low frequency, the need for transfers between public transport – **poor DIRECT connections with the city**, especially with the central

The lack of bicycle lanes was also mentioned here.



Integrated mobility

The solutions to solve the connectivity with the rest of the city can be: improving the access to the public transport stations, **optimizing the routes and setting up new routes** that will make more and more inhabitants prefer public transport, avoiding traveling by car.



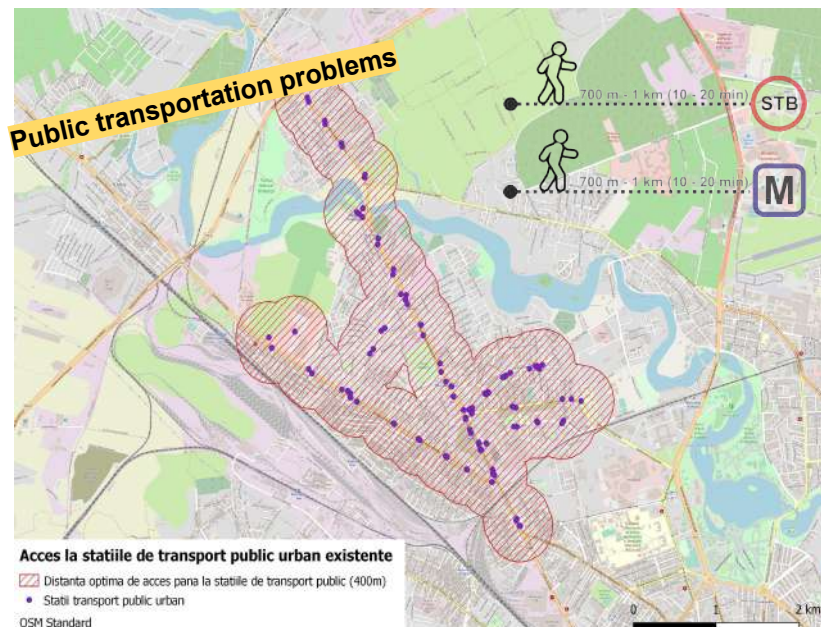
Results of the consultation of the inhabitants about opinions and perceptions located in the space

A more connected life in the neighborhood.

Car independence

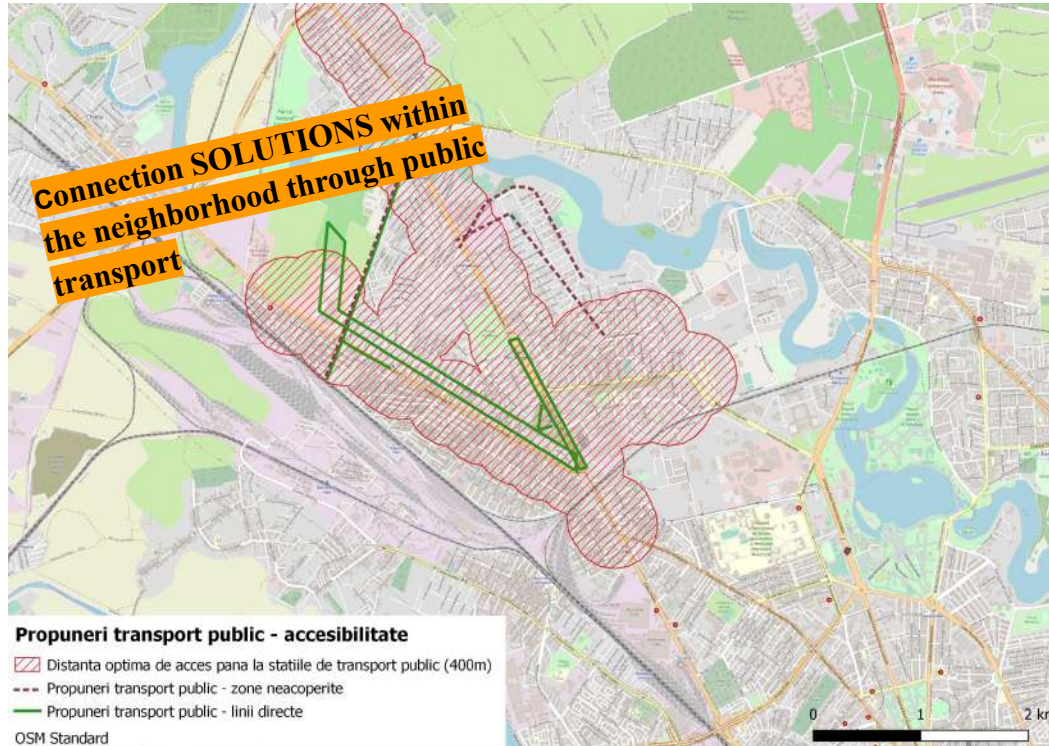
Problems with access to public transport stations. The area covered for public transport - location of stops and acceptable distances to the first stop.

The area covered for public transport - location of stops and acceptable distances to the first stop. Uncomfortable public transport stops (too narrow spaces, no protective elements, no furniture, no information)



A more connected life in the neighborhood.

Car independence



The solutions are route optimization, improving access to stops, introducing reserved lanes, for example on line 331.

Improving the quality of some public transport stops (Jiului, Bazilescu, etc.)

Setting up access ways to metro stations (Bazilescu, Jiului) on the eastern side of Bucureștii Noi Bd.



Car independence

A more connected life in the neighborhood.

Discomfort for pedestrians and cyclists (parked cars, obstacles, inaccessible public space, lack of furniture to sit on). Difficulties of non-motorized crossing (pedestrians / cyclists) of Constanța bridge.

ACCESSIBILITY PROBLEMS



VOCEA din Cartierul București Noi
6 octombrie 2018

Reglementarea traficului auto și pietonal pe strada Otteniei, tronsonul între Oastei și Subcetate, ar fi utilă?

Momentan se întâmplă ca în imaginile alăturate:

1. Autoturismele parcate pe trotuar împiedică pietonii să circule în siguranță pe spațiul dedicat lor;
2. Dacă un autoturism este parcat pe strada Otteniei pe sensul spre Subcetate face ca două autoturisme din sensuri contrare să nu poată trece nestingherite unul pe lângă celălalt.

Avantajele stabilirii sensului unic pe tronsonul străzii Otteniei, pe tronsonul Oastei-Subcetate sunt:

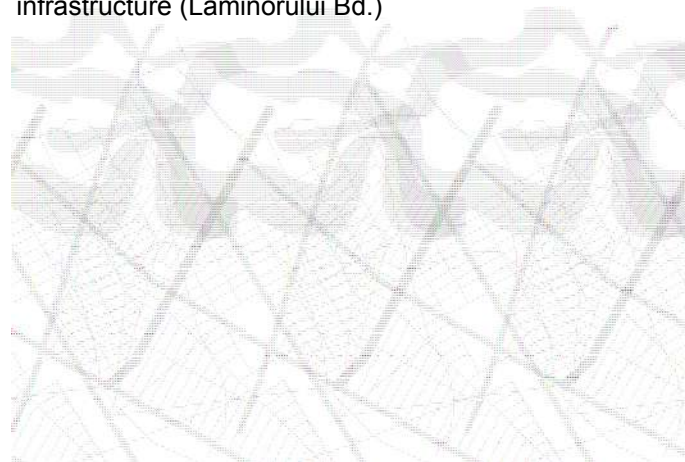
1. pietonii pot folosi în întregime spațiul trotuarului pe partea parcului;
2. se pot organiza 75-80 de locuri de parcare laterală, pe partea carosabilului dinspre parc pentru vizitatorii motorizați ai parcului;
3. fluența traficului, într-un singur sens, pe toată lungimea acestui tronson va fi asigurată chiar dacă vor fi parcate autoturisme ale riveranilor pe partea de vizavi de parc.

Merită încercat, cred eu!



sursă: VOCEA din Cartierul București Noi

Traffic congestion on Godeanu Bd. (very narrow) towards Laminorului Bd.. Unfinished street infrastructure (Laminorului Bd.)



Lack of direct connections between the points of interest within the neighborhood (for example, the lack of the possibility to cross the industrial area from Pajura to Jiului Bd. by public transport).

Lack of pedestrian access to the lake shore and of a promenade along it.

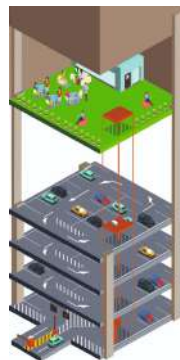
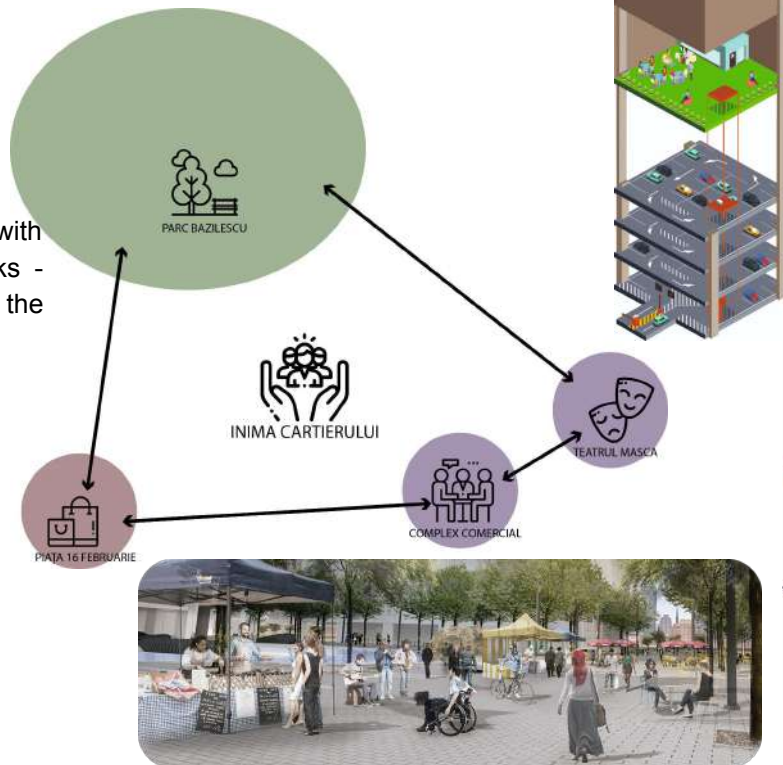
A more connected life in the neighborhoods.

Car independence

Redesigning streets to increase the comfort of pedestrians and cyclists, especially in areas / routes with a large number of pedestrians - to the market, subway stations, schools, etc.

"Pedestrian core" - the pedestrian heart of the neighborhood

A pedestrian area, correlated with parking / multi-storey car parks - behind the theater and at the former shopping complex



Multi-storey car parks (clearing out public space) - in residential areas, in connection with facilities / areas of general interest - behind the Theater (formerly known as Masca) etc

Space sharing area (pedestrians-bicycles) 16 February Square - Bazilescu Park and the construction of an underground car park in the market area

Carrying out a parking strategy.



Planul Comunitar de Dezvoltare a Zonei Urbane Bucureștii Noi



D.NEW-OLD TENSIONS (defense regime, urban design, notifying and authorization)

ATU Coordinator: architect Vera MARIN

Inspirational guest: Bogdan IANCU

Part of the SNSPA team - within the partnership with the City Hall of District 1 for the accomplishment of the Sustainable Development Strategy - October 2019 - March 2020

GIC representative: architect Tiberiu NICA

Participants with training in architecture, urbanism, geography, engineering, landscaping:

George Adelin LAZĂR

Participants with training in anthropology, political science, sociology: Anhtr.
Andra MACHEDON



A more relaxed life in the neighborhood.

Maintaining the specificity of Bazilescu neighborhood.

This spring, Mihai spent 3 Sundays guiding the neighborhood tours for neighbors. He is a retired architect and is very pleased that the registration list is always full.

"I can be sure that the atmosphere in Bazilescu will not change. It is on the list of historical monuments for a reason."

CHANGE

The Bazilescu plot has a detailed urban regulation and adapted to the specific needs of this protected built area.

BENEFITS

- Detailed and correct working tool for public approval and authorization institutions.
- Detailed guide for architects in configuring solutions that fit correctly into the context

Din chestionar reiese preferința locuitorilor pentru spațiile proiectate asemenea parcelării Bazilescu. Pentru a conserva în continuare semnificația istorică, regulile ar trebui întocmite ca în alte zone construite protejate.

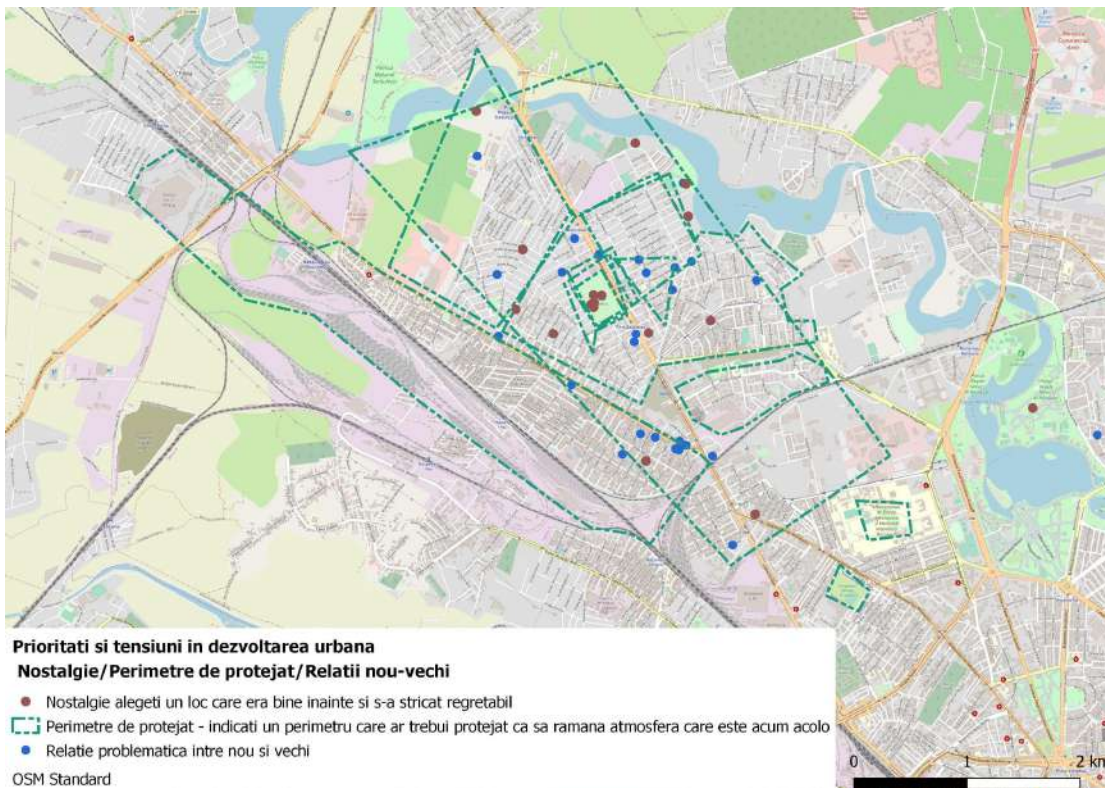


A more relaxed life in the neighborhood.

Proposals based on consultation of residents about opinions and perceptions related to space - perimeters that deserve to be protected

Maintaining the specificity of Bazilescu Neighborhood

Only a part of the inhabitants dissatisfied with the new constructions in the Bazilescu plot, but also in the rest of the urban area of Bucureștii Noi responded with this tool. The number of incompatibility situations is much higher.

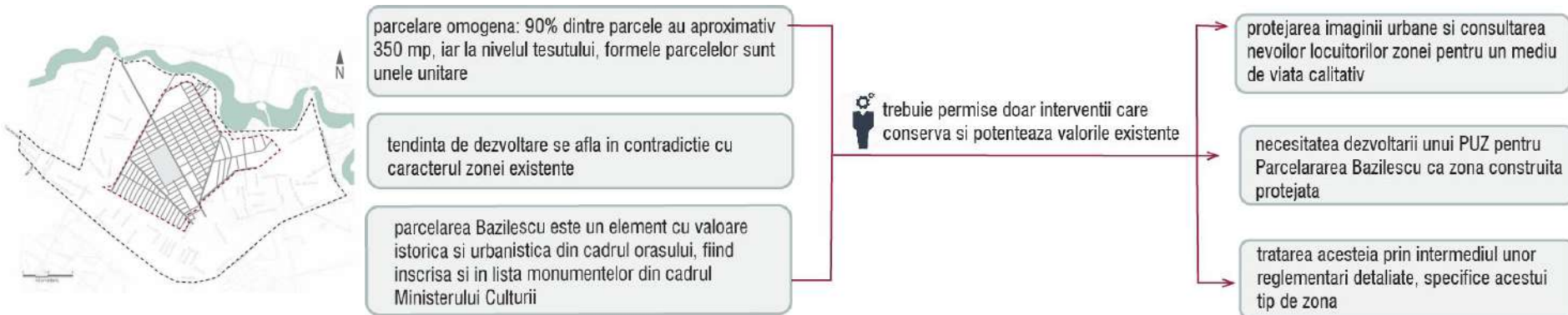


Arguments, explanatory schemes

Although classified on the list of Historical Monuments - as a class B monument, Bazilescu plot plan did not have specific regulations through the PUZ of Protected Built Area.

<http://2014-2020.adrbi.ro/media/2885/lista-monumentelor-istorice-din-bucuresti.pdf>

191	B-II-s-B-17913	Parcelarea Bazilescu	municipiul BUCUREȘTI	Bd. Laminorului - str. Fabrica de Căramidă -str. Elocinței - str. Neajlovului - str. Coralilor - str. Piatra Morii - Bd. Gloriei - str. Triumfului - str. Lăstărișului - str. Mandolinei - str. Renașterii - Sos. Chitila	sf. sec. XIX - prima jum. sec. XX
------------	----------------	----------------------	----------------------	---	--------------------------------------

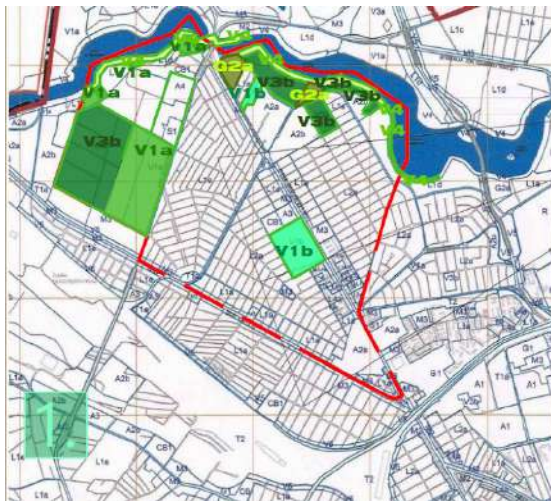


A more relaxed life in the neighborhood

Arguments, explanatory schemes

Reference Territorial Units – RTUs = perimeters where the same building rules and use constraints apply

RTU in PUG 2001



Field situation – 2010

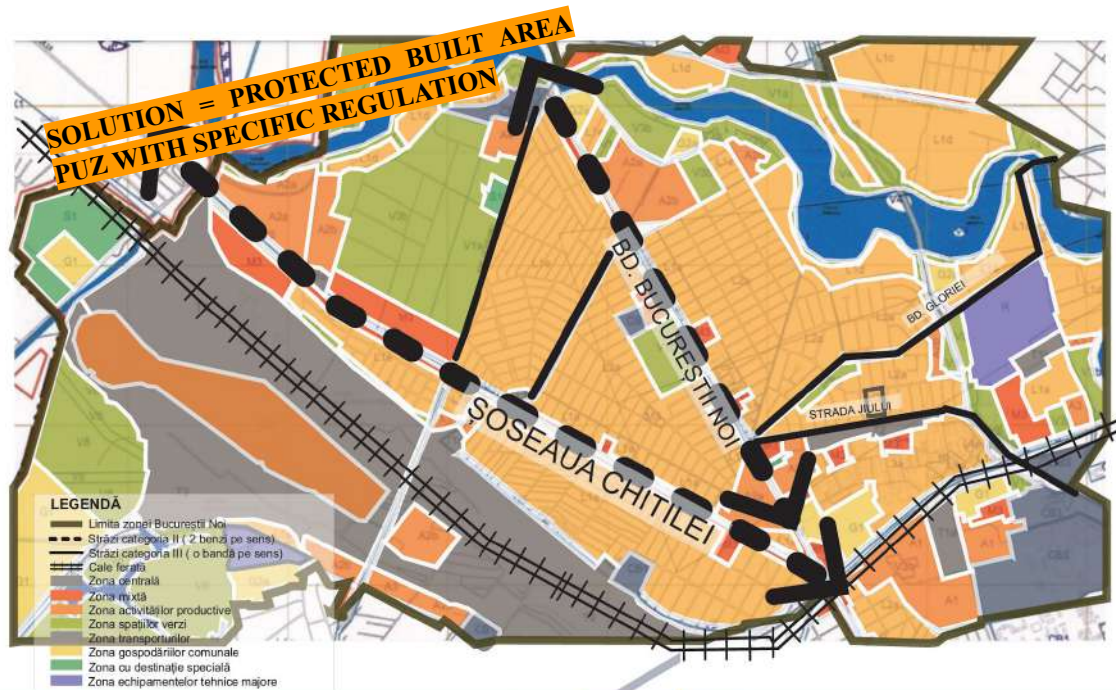


Field situation – 2019



A more relaxed life in the neighborhood

Arguments, explanatory scheme



The chief architect of district 1 together with his counterpart of the General City Hall, can initiate the elaboration of this urbanism regulation to ensure real protection to the perimeter on the M.I. list.

The Order of Architects of Romania can be involved by supporting the adoption of this regulation, aiming to maintain a balance between the historical value of the area and new interventions.

Civic initiative groups have an important role, being intermediaries between decision makers and the inhabitants of the neighborhood. They have an increased concern for the identity of the area and can help to promote the spoken history of the area, for example through guided tours (*Tourist in my neighborhood*).

A more relaxed life in the neighborhood.

Stop building huge blocks between houses

"I'm not afraid my house value for which I took out a loan for 20 years will drop!"

*Since the new regulation was approved, George knows that on the still unused plot next to his house, it will **not** be possible to build a block of flats with more than 4 apartments, and the new neighbors will not leave their cars on the street. He has seen neighbors in the past who have greatly suffered because of this.*

CHANGE

The areas with houses in Bucureștii Noi will not be suffocated by big buildings for those plots. An intermediate category of small blocks was defined in the urbanism regulation.

BENEFITS

- Certainty regarding the building possibilities for all owners.
- Clear conditions for real estate developers who encourage business plans which respect public interest.

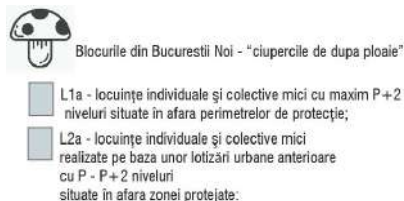


A more relaxed life in the neighbourhood.

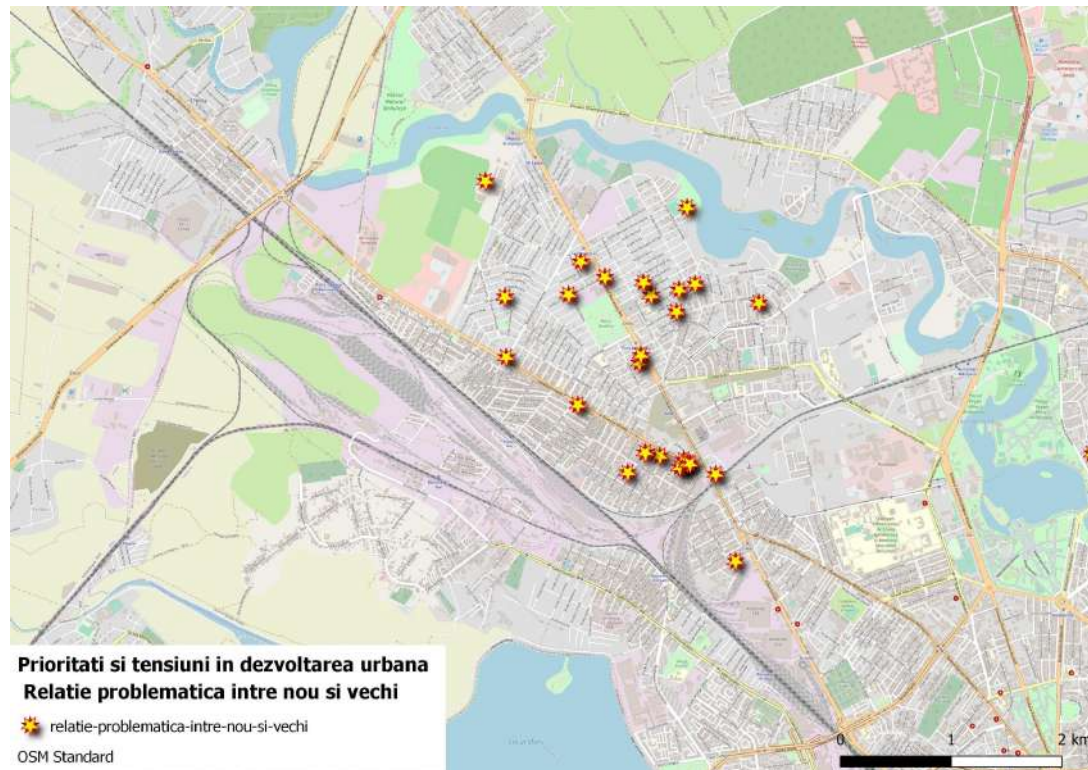


CE FACEM?

The construction of blocks of flats attached to individual dwellings produces a discontinuity that affects the inhabitants.



The construction of blocks of flats attached to individual dwellings produces a discontinuity that affects the inhabitants.



Results of survey – Maptionnaire Platform – 136 respondents – 01/11/2019

A more relaxed life in the neighborhood.

Stop building high blocks between houses

SOLUTION: A CATEGORY OF SMALL COLLECTIVE DWELLINGS

An **intermediate category** is needed for future developments: small blocks - collective housing coherently integrated in the area.

The chief architect of district 1 has the responsibility to prevent disfunctions that unbalance the aesthetics and functionality of the neighborhood, so the implementation of a new category of housing would help future architects in future projects.

INCOMPATIBILITATE



Regulations must also protect the interests of the inhabitants. Investors do not take these interests into account, building blocks (collective housing) that are too high choking the existing structures.



Investors keep this unfavorable development of the area, still designing buildings which are too high.



And a new block appears... even the inhabitants from the previously built blocks are dissatisfied because they too are inconvenienced by these constructions.



A more relaxed life in the neighborhood.

Defining orderly and beautiful areas and spaces in Străulești Sud

“We have a new and beautiful neighborhood and one can plainly see we care about how we live together.”

CHANGE

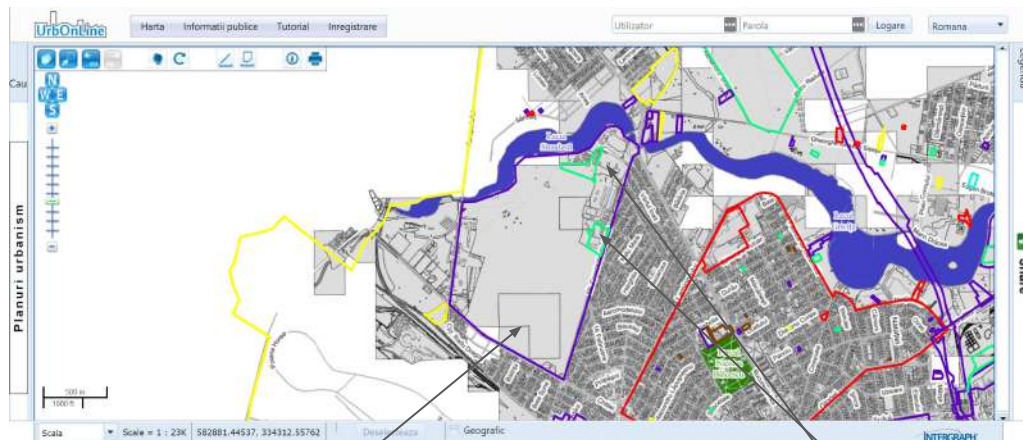
The allowed use of plots was clear in the Străulești Sud PUZ perimeter. Spaces and public functions were introduced as an urban design solution chosen through a contest.

BENEFICII

- Proiectare urbană centrată pe locuitor: spații publice și dotări integrate într-o compoziție echilibrată

Adi went to the mall in Străulești at the weekend. On the way back, he took a walk in the shade on the public space that leads to the lake. He sat on a bench in the square next to the new library. He is very content that there is a lot of space here where you can spend time. This new neighborhood is beautiful.

Source: urbanism.pmb.ro



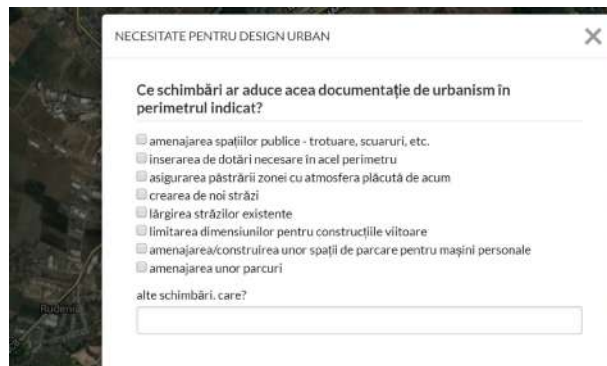
Perimeter announced in 2018 as designated for the PUZ that PMB has to initiate

„Plot” PUZ initiated in 2019

A more relaxed life in the neighborhood.

Proposals based on consultation of residents about opinions and perceptions related to TENSIONS BETWEEN OLD AND NEW

Defining orderly and beautiful areas and spaces in Străulești Sud



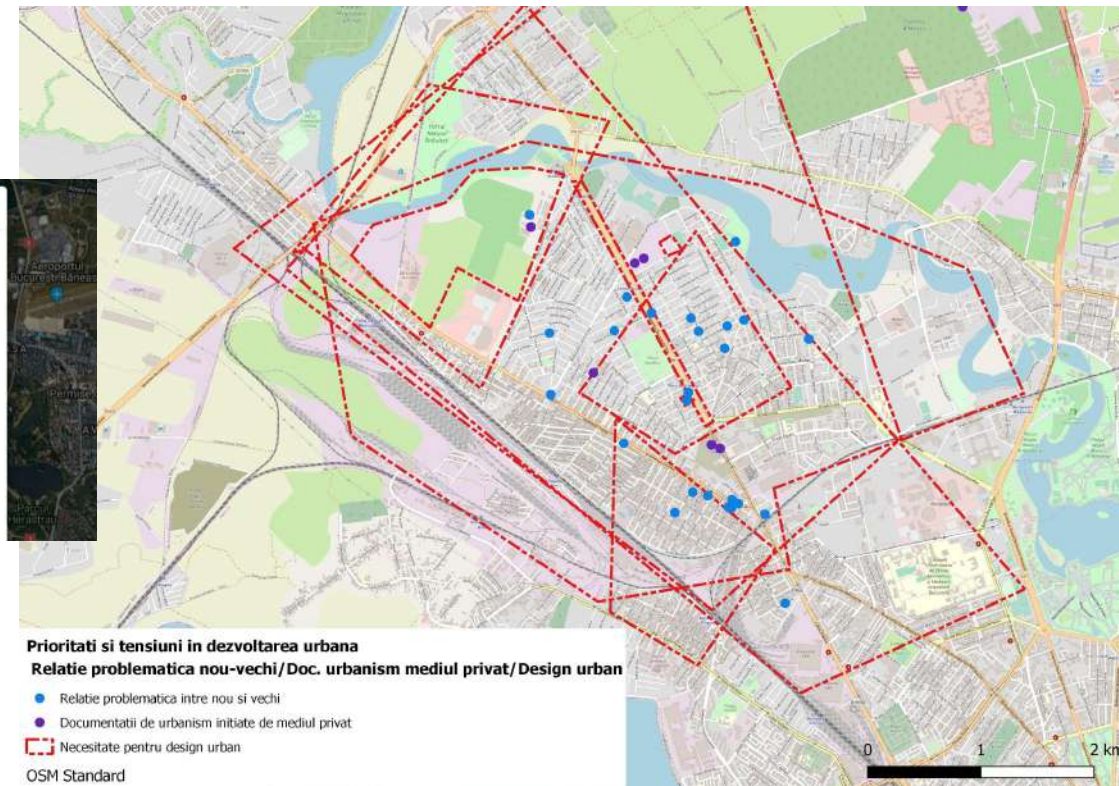
NECESITATE PENTRU DESIGN URBAN

Ce schimbări ar aduce acea documentație de urbanism în perimetrul indicat?

- ☐ amenajarea spațiilor publice - trotuare, scuaruri, etc.
- ☐ inserarea de dotări necesare în acel perimetru
- ☐ asigurarea păstrării zonei cu atmosfera plăcută de acum
- ☐ crearea de noi străzi
- ☐ lărgirea străzilor existente
- ☐ limitarea dimensiunilor pentru construcțiile viitoare
- ☐ amenajarea/construirea unor spații de parcare pentru mașini personale
- ☐ amenajarea unor parcuri

alte schimbări, care?

Asked about the need for urban design, the residents also mentioned the need to fit out existing public spaces, but also interventions on wider areas - in which to create new public spaces, and the insertion of facilities, etc.



A more relaxed life in the neighborhood.

Defining orderly and beautiful areas and spaces in Străulești Sud

SOLUTION: COORDINATION BETWEEN PUBLIC AND PRIVATE INITIATIVES

NEVOIE DE DESIGN URBAN

The best ideas stem from the collaboration between specialists, decision makers, businessmen, inhabitants.

Urban planning and design processes are ideal for a structured discussion about the future to identify specific needs, but also resources, aspirations.

Regarding **the solution contest from Cluj, in the Sopor area**, this can also be organized for Străulești Sud – a perimeter for which PMB - Bucharest City Hall - promised a PUZ - Zonal Urban Plan.



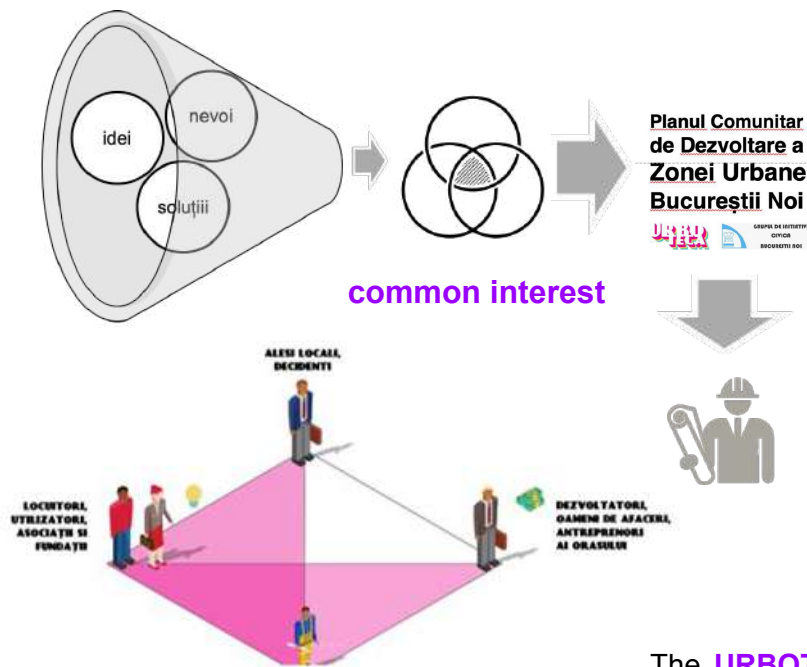
Where did the community plan start from, what is it now and what we want it to become

The Community Plan is built on ideas that have proven important to more people.

Through questionnaires, interviews and the Maptionnaire platform, we have managed, in the last 2 years, to find overlaps of individual concerns in ideas that are common to several people - thus approaching the **COMMON INTEREST**.

The Community Plan is **an instrument through which several categories of urban actors can achieve more efficient** collaborations precisely because the development objectives for the urban area of Bucureștii Noi are now clearer.

A very important role in the use of this tool belongs to **specialists** in various fields who are also **inhabitants of this urban area**.



Specialists in various fields who are also inhabitants of Bucureștii Noi Urban Area

The ideas put forward are **aspirations** and **development objectives**, but they need to be translated into technical documentation in which specialists from various fields will have to be **professionally** involved.

These ideas are a **starting point** for specifications and / or **solution contests** that we hope to see launched soon.

The **URBOTECĂ** team would like to thank the **Bucureștii Noi Civic Initiative Group** for the patience and trust given in these two years and it will contribute to the promotion of this tool in the next period.